

Microsoft.74-409.

Number: 74-409
Passing Score: 800
Time Limit: 120 min
File Version: 16.5

Exam Code:74-409

**Exam Name:Server Virtualization with Windows Server Hyper-V and System
Center**

Exam A

QUESTION 1

DRAG DROP

You are the virtualization administrator for an organization. The organization uses all components of System Center 2012 R2 in its production environment.

You need to configure the environment to support Performance and Resource Optimization (PRO).

How should you configure the environment? To answer, drag the appropriate server role to the correct location or locations. Each server role may be used once, more than once, or not at all. You may need to drag the split bar between panes or scroll to view content.



| Operation | Server |
|--|--------|
| Install the VMM console. | |
| Enable Agent Proxy for the Operations Manager agent. | |

- A.
- B.
- C.
- D.

Correct Answer:

Section: (none)

Explanation

Explanation/Reference:

"A Composite Solution With Just One Click" - Certification Guaranteed 2 Microsoft 74-409 : Practice Test



| Operation | Server |
|--|--------------------------------------|
| Install the VMM console. | Operations Manager Management Server |
| Enable Agent Proxy for the Operations Manager agent. | Virtual Machine Manager Server |

QUESTION 2

HOTSPOT

You plan to implement guest clustering.

You review the following information:

- Whoami results, as shown in the Whoami Command exhibit (Click the Exhibit button.)

Whoami Command | System Information Settings | Features Wizard

Administrator: C:\Windows\system32\cmd.exe

```

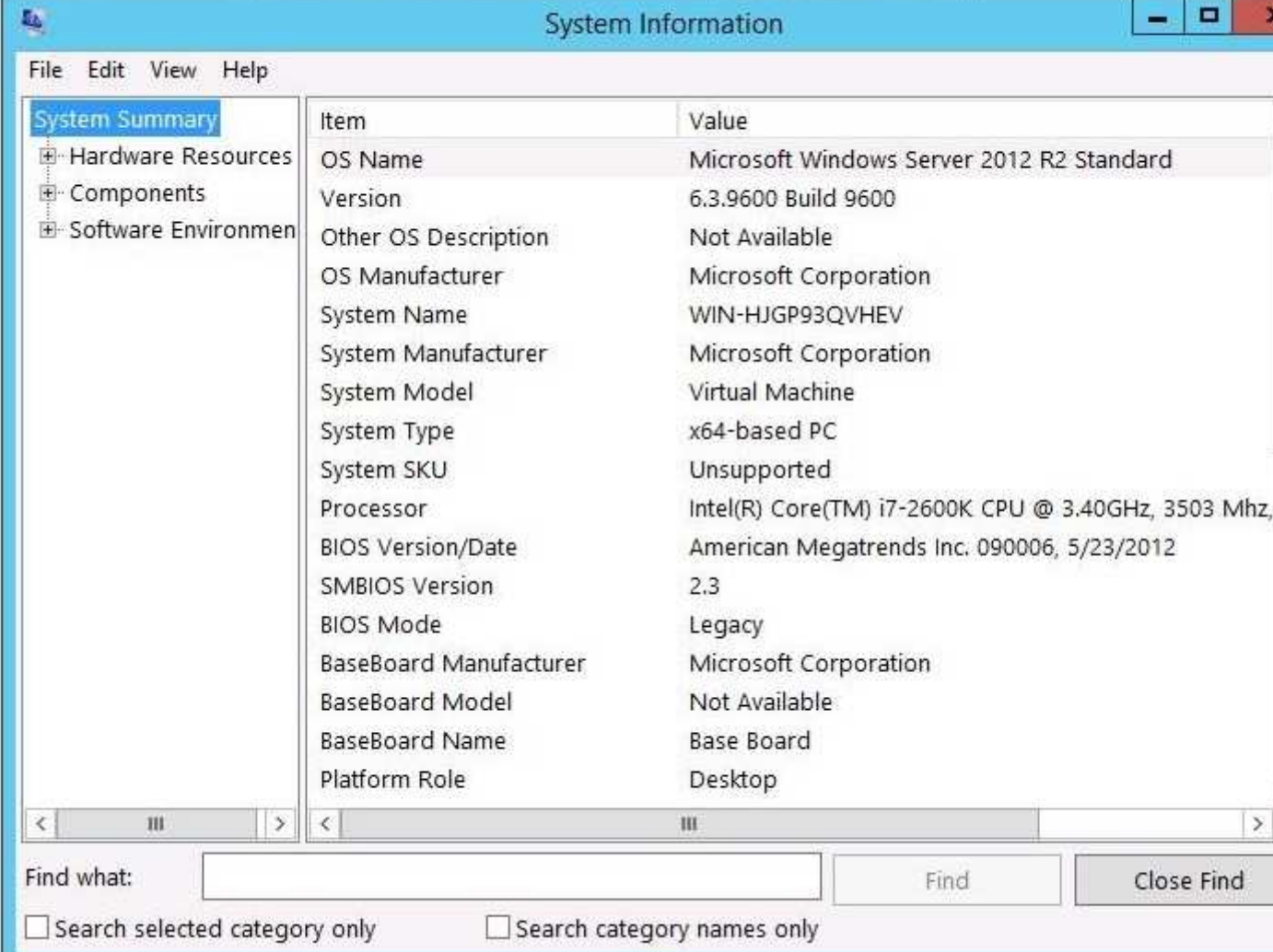
Microsoft Windows [Version 6.3.9431]
(c) 2013 Microsoft Corporation. All rights reserved.

C:\Users\administrator.CONTOSO>whoami
contoso\administrator

C:\Users\administrator.CONTOSO>

```

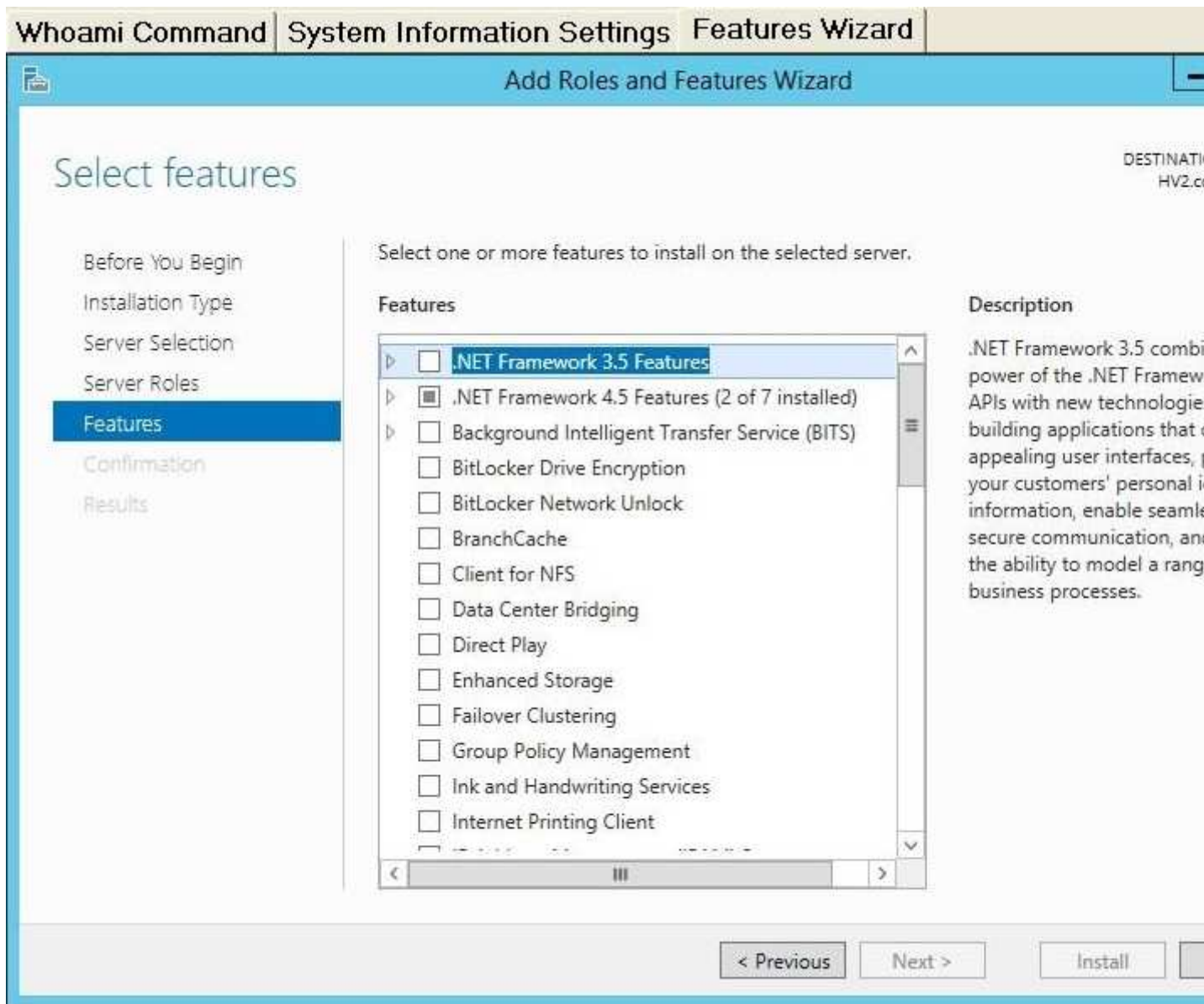
- System information settings, as shown in the System Information Settings exhibit (Click the Exhibit button.)



The screenshot shows the 'System Information' window with the 'System Summary' category selected. The main pane displays a list of system items and their values. The 'Find what:' search bar is empty, and the 'Search selected category only' checkbox is checked.

| Item | Value |
|------------------------|---|
| OS Name | Microsoft Windows Server 2012 R2 Standard |
| Version | 6.3.9600 Build 9600 |
| Other OS Description | Not Available |
| OS Manufacturer | Microsoft Corporation |
| System Name | WIN-HJGP93QVHEV |
| System Manufacturer | Microsoft Corporation |
| System Model | Virtual Machine |
| System Type | x64-based PC |
| System SKU | Unsupported |
| Processor | Intel(R) Core(TM) i7-2600K CPU @ 3.40GHz, 3503 Mhz, |
| BIOS Version/Date | American Megatrends Inc. 090006, 5/23/2012 |
| SMBIOS Version | 2.3 |
| BIOS Mode | Legacy |
| BaseBoard Manufacturer | Microsoft Corporation |
| BaseBoard Model | Not Available |
| BaseBoard Name | Base Board |
| Platform Role | Desktop |

- The Add Roles and Features Wizard, as shown in the Features Wizard exhibit (Click the Exhibit button.)



You need to ensure that you can implement guest clustering.

"A Composite Solution With Just One Click" - Certification Guaranteed 4 Microsoft 74-409 : Practice Test
For each of the following statements, select Yes if the statement is true. Otherwise, select No. Each correct selection is worth one point.

- | Yes | No | |
|-----------------------|-----------------------|---|
| <input type="radio"/> | <input type="radio"/> | The server has the necessary features installed. |
| <input type="radio"/> | <input type="radio"/> | You have the required permissions. |
| <input type="radio"/> | <input type="radio"/> | The server has the necessary edition of Windows Server 2012 R2. |

- A.
- B.
- C.
- D.

Correct Answer:

Section: (none)

Explanation

Explanation/Reference:

Yes

No



The server has the necessary features installed.



You have the required permissions.



The server has the necessary edition of Windows Server 2012 R2.

QUESTION 3

DRAG DROP

You administer a Hyper-V environment that uses Windows Server 2012 R2 and System Center 2012 R2 Virtual Machine Manager (VMM).

A line-of-business (LOB) application requires two virtual machines (VMs). Each VM must have direct access to existing Fibre Channel storage.

You need to ensure that the two VMs have direct access to Fibre Channel storage.

Which three actions should you perform in sequence? To answer, move the appropriate actions from the list of actions to the answer area and arrange them in the correct order.

Configure the Hyper-V host servers with one or more Fibre Channel host bus adapters (HBAs). Connect the Hyper-V host servers to the storage area network (SAN).

Configure each Hyper-V host server with at least one virtual storage area network (SAN). Add a Fibre Channel adapter to each VM.

Configure each Hyper-V host server with at least one Cluster Shared Volume (CSV).

Configure Storage Quality of Service (QoS) on each of the VMs.

Install a storage area network (SAN) that supports only N_Port ID Virtualization (NPIV).

Install a storage area network (SAN) that supports only Offloaded Data Transfer (ODX).

A.

- B.
- C.
- D.

Correct Answer:

Section: (none)

Explanation

Explanation/Reference:

Configure the Hyper-V host servers with one or more Fibre Channel host bus adapters (HBAs). Connect the Hyper-V host servers to the storage area network (SAN).

Configure each Hyper-V host server with at least one virtual storage area network (SAN). Add a Fibre Channel adapter to each VM.

Configure each Hyper-V host server with at least one Cluster Shared Volume (CSV).

Configure Storage Quality of Service (QoS) on each of the VMs.

Install a storage area network (SAN) that supports only N_Port ID Virtualization (NPIV).

Install a storage area network (SAN) that supports only Offloaded Data Transfer (ODX).

Install a storage area network (SAN) that supports only N_Port ID Virtualization (NPIV).

Configure each Hyper-V host server with at least one virtual storage area network (SAN). Add a Fibre Channel adapter to each VM.

Configure the Hyper-V host servers with at least one Fibre Channel host bus adapter (HBA). Connect the Hyper-V host servers to the storage area network (SAN).

QUESTION 4

DRAG DROP

A company uses System Center 2012 R2 Virtual Machine Manager (VMM).

You need to create and assign a self-service user role in VMM.

You have the following requirements:

All role members must share ownership of all virtual machines (VMs) that any role member creates.
Role members must be able to deploy VMs.
Role members must NOT have authoring rights.

Which three actions should you perform in sequence? To answer, move the appropriate actions from the list of actions to the answer area and arrange them in the correct order.

Create a role and assign the local group to the user role.

Create a local security group.

Create a role and assign the Local Administrator action to the role members.

Assign the Deploy (From template only) action to the role members.

Create a role and assign the security group to the user role.

Create an Active Directory Domain Services security group.

- A.
- B.
- C.
- D.

Correct Answer:

Section: (none)

Explanation

Explanation/Reference:

Create a role and assign the local group to the user role.

Create a local security group.

Create a role and assign the Local Administrator action to the role members.

Assign the Deploy (From template only) action to the role members.

Create a role and assign the security group to the user role.

Create an Active Directory Domain Services security group.

Create a local security group.

Create a role and assign the local group to the user role.

Assign the Deploy (From template only) action to the role members.

QUESTION 5

A company has Active Directory Domain Services (AD DS) domain controllers that run on Windows Server 2012 R2 servers. There are two forests, and each has a single domain. There is a two-way forest trust between the forests. The company uses Hyper-V for server virtualization. The Hyper-V environment contains the Hyper-V host servers as shown in the following table:

| Number of Hyper-V hosts | Domain or Workgroup | Network location |
|-------------------------|---------------------|-------------------|
| 4 | Contoso.com | Internal network |
| 2 | Fabrikam.com | Internal network |
| 2 | Ext.contoso.com | Perimeter network |

You prepare to deploy System Center 2012 R2 Data Protection Manager (DPM) to back up the Hyper-V environment. The deployment must meet the following requirements:

ensure that all Hyper-V servers can be backed up by using DPM Hyper-v hosts in the perimeter network
must use certificate-based authentication Hyper-V hosts in the internal network must use Kerberos authentication
minimize the total number of DPM servers

You need to deploy DPM to the environment.

What should you deploy?

- A. four DPM servers in the internal network and two DPM servers in the perimeter network
- B. two DPM servers in the internal network only
- C. two DPM servers in the internal network and two DPM servers in the perimeter network
- D. two DPM servers in the internal network and one DPM server in the per meter network

Correct Answer: C

Section: (none)

Explanation

Explanation/Reference:

QUESTION 6

You administer a Windows Server 2012 R2 Hyper-V host server that contains production and test virtual machines (VMs). You plan to optimize the performance of the VMs.

The following settings must be applied to the VMs:

You must set a maximum value for the input/output operations per second (IOPS) on the test VMs.
You must set a minimum value for the IOPS on the production VMs.

You need to configure the environment. What should you do?

- A. On all VMs, enable Network Quality of Service (QoS).
- B. Create a shared virtual hard disk (VHD).
- C. On the Hyper-V host server, enable Resource Metering.
- D. On all VMs, enable Storage Quality of Service (QoS).

Correct Answer: D

Section: (none)

Explanation

Explanation/Reference:

QUESTION 7

DRAG DROP

You use System Center 2012 R2 Virtual Machine Manager (VMM) to manage a Hyper-V environment that

consists of two host groups named Dev1 and Prod1. It also has two private clouds named DevCloud and ProdCloud.

You have a self-service user role named DevVMAdmins. DevVMAdmins does NOT have the rights to perform any actions. DevVMAdmins must have the ability to start virtual machines (VMs), stop VMs, and shut down VMs. It must also be able to use resources from other self-service users.

You need to configure the DevVMAdmins user role.

How should you complete the relevant Windows PowerShell command? To answer, drag the appropriate Windows PowerShell segments to the correct locations in the cmdlet. Each Windows PowerShell segment may be used once, more than once, or not at all. You may need to drag the split bar between panes or scroll to view content.

Set-SCUserRole

CanReceive

New-VMMUserRole

CanShare

Author

-UserRole \$UserRole

-Name "Dev VM Admins"

-Permission @(" ", "Shutdown", "Start", "Stop")

- A.
- B.
- C.
- D.

Correct Answer:

Section: (none)

Explanation

Explanation/Reference:

Set-SCUserRole

CanReceive

New-VMMUserRole

CanShare

Author

Set-SCUserRole

-UserRole \$UserRole

-Name "Dev VM Admins"

-Permission @(" CanReceive ", "Shutdown", "Start", "Stop")

QUESTION 8

A company uses System Center 2012 R2 Virtual Machine Manager (VMM).

You have the following requirements:

Self-service users must be able to store and share their resources.

Self-service users must be able to use the resources to create profiles and templates in VMM.

You need to configure VMM to support self-service users.

Which three actions should you perform? Each correct response presents part of the solution.

- A. In the VMM library share, create a user data path.
- B. Grant the Read permission and the Write permission to all role members.
- C. In the Public Documents share, create a user data path.
- D. Assign the Deploy action to the role members.
- E. Grant the Read & execute permission to all role members.
- F. Assign the Author action to the role members.

Correct Answer: ABF

Section: (none)

Explanation

Explanation/Reference:

Explanation: A (not C): VMM for System Center 2012 allows self-service users to use the VMM console, and to see their logical and physical resources in the Library workspace.

* Self-service user data paths Configure user data paths on self-service user roles to provide a place where members of a self-service user role can upload and share their own resources. The user data path also is the best place for administrators to store resources that only members of a self-service user role need to use.

B: (not E) Access control permissions determine whether the users have Read/Write or Read/only access.

F (not D):

* Author

Grants members permission to author templates and profiles. Users with authoring rights can create hardware profiles, operating system profiles, application profiles, SQL Server profiles, virtual machine templates and service templates.

* Deploy

Grants members permission to deploy virtual machines and services from templates and virtual hard disks that are assigned to their user role. However, they do not have the right to author templates and profiles.

QUESTION 9

You have a Windows Server 2012 R2 Hyper-V environment that includes System Center 2012 R2 Virtual Machine Manager (VMM). The environment includes five physical servers.

The servers are configured as follows:

| Server Name | Operating System | Memory | Disk Volume |
|-------------|---|---------|-------------|
| NYC-FS | Windows Server 2012 Datacenter | 2048 MB | 3 TB |
| NYC-DEV | Windows Server 2008 R2 Enterprise | 1024 MB | 1 TB |
| NYC-EX | Windows Server 2008 Standard 32-bit | 4096 MB | 4 TB |
| NYC-PR | Windows Server 2003 Enterprise x64 Service Pack 2 | 512 MB | 500 GB |
| NYC-WEB | Windows Server 2003 Web Edition | 768 MB | 200 GB |

You plan to use VMM to migrate physical machines to virtual machines.

You need to reconfigure the hardware on the servers to support a physical to virtual offline migration.

Which three servers should you reconfigure? Each correct answer presents part of the solution.

- A. NYC-DEV
- B. NYC-WEB
- C. NYC-PR
- D. NYC-FS
- E. NYC-EX

Correct Answer: ABC

Section: (none)

Explanation

Explanation/Reference:

Explanation: The source computer cannot have any volumes larger than 2040 GB. This disqualifies NYC-FS(not D) and NYC-EX (not E).

Note:

* Requirements on the Source Machine

To perform a P2V conversion, your source computer:

/Must have at least 512 MB of RAM.

/ Cannot have any volumes larger than 2040 GB.

/ Must have an Advanced Configuration and Power Interface (ACPI) BIOS Vista WinPE will not install on a non-ACPI BIOS.

/ Must be accessible by VMM and by the host computer.

/ Cannot be in a perimeter network. A perimeter network, which is also known as a screened subnet, is a collection of devices and subnets placed between an intranet and the Internet to help protect the intranet from unauthorized Internet users. The source computer for a P2V conversion can be in any other network topology in which the VMM server can

"A Composite Solution With Just One Click" - Certification Guaranteed 11 Microsoft 74-409 : Practice Test

connect to the source machine to temporarily install an agent and can make Windows Management Instrumentation (WMI) calls to the source computer.

QUESTION 10

You administer a Virtual Desktop Infrastructure (VDI). The environment runs on a Windows Server 2012 R2 server that has the Hyper-V role installed. You use Systems Center 2012 R2 Operations Manager to troubleshoot performance issues.

Some users of dedicated virtual desktops report slow response times within their sessions. Operations Manager reports indicate that a performance bottleneck exists at the storage layer.

You need to manage the amount of input/output operations per second (IOPS) that the dedicated desktop pool can generate.

What should you do?

- A. Enable Resource Metering on the Hyper-V host server.
- B. Configure Operations Manager to monitor virtual machine disk performance on the Hyper-V host server. Configure monitoring alerts for virtual machine use greater than the allowed IOPS.
- C. For each virtual machine, enable Network Quality of Service (QoS). Set a minimum and maximum value for the Mbps property.
- D. For each virtual machine, enable Storage Quality of Service (QoS). Set a minimum and maximum value for IOPS.

Correct Answer: C

Section: (none)

Explanation

Explanation/Reference:

QUESTION 11

A company has a Hyper-V failover cluster that consists of sixteen host servers that run Windows Server 2012 R2. The company uses System Center 2012 R2 Virtual Machine Manager (VMM) to manage the Hyper-V environment.

Eight of the host servers are used only for engineering-related services. The other eight host servers are used for general corporate use.

You need to ensure that the corporate virtual machines (VMs) are never moved to the host servers that are used for engineering.

What should you do?

- A. Create a new VMM availability set for the corporate VMs.
- B. Create a custom property for the corporate VMs and host servers. Then, use a custom placement rule for the host group. Specify that the rule must match.
- C. In the corporate VMs, set the value of the Preferred Owners setting to the names of the corporate host servers.
- D. Create a new VMM availability set for the corporate host servers.

Correct Answer: B

Section: (none)

Explanation

Explanation/Reference:

QUESTION 12

You use System Center 2012 R2 Operations Manager to monitor the datacenter infrastructure and applications for an organization. You import the SQL Server Management Pack.

You are unable to monitor long-running SQL Server Agent jobs. You observe that the SQL Server Agent Jobs View displays zero instances. Other SQL Server-related monitoring operations function as expected.

You need to monitor long-running SQL Server Agent jobs.

What should you do?

- A. Enable the Job Duration unit monitor.
- B. Enable agent proxy for SQL Servers.
- C. Enable the object discovery for the SQL Server Agent Job class.
- D. End maintenance mode for the SQL Server 2012 Computers group.

Correct Answer: C

Section: (none)

Explanation

Explanation/Reference:

QUESTION 13

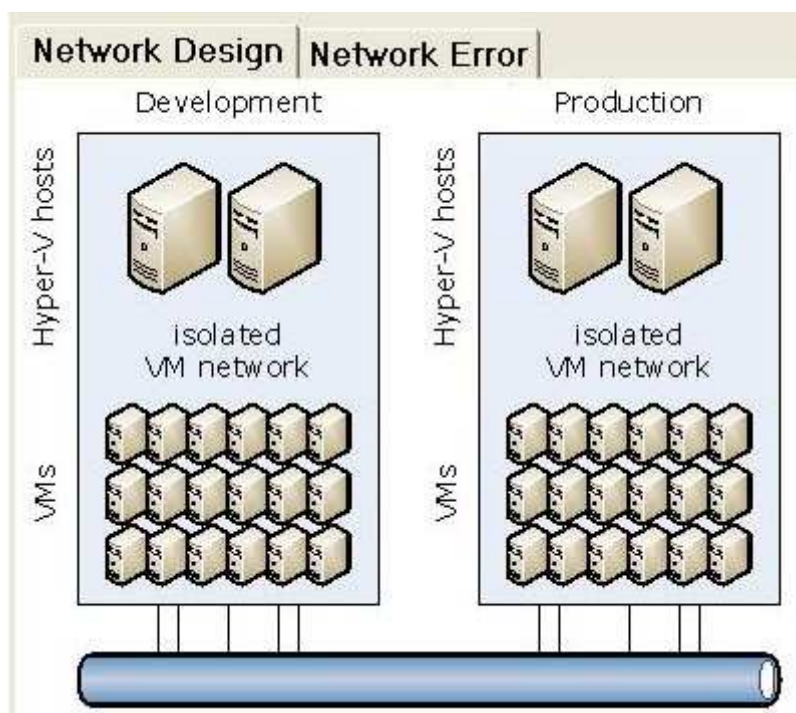
HOTSPOT

A company has a single Active Directory Domain Services (AD DS) domain and four Windows Server 2012 R2 servers that have the Hyper-V role installed. The company uses System Center 2012 R2 Virtual Machine Manager (VMM) to manage the Hyper-V environment. One set of Hyper-v host servers is dedicated for use by the development environment. A second set of Hyper-v host servers is dedicated for use by the production environment.

The network architects assign the IP address subnets as shown in the following table:

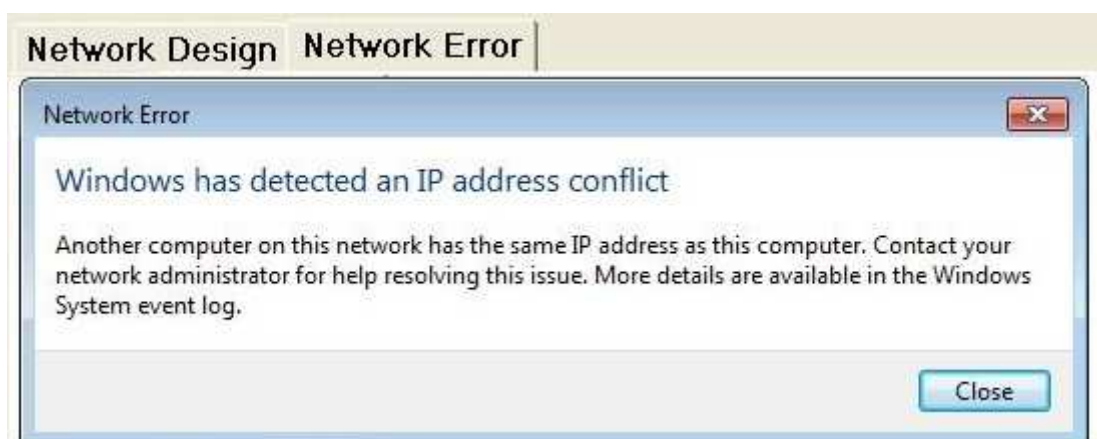
| Environment | Role | Subnet Assignment |
|-------------|----------------|-------------------|
| Development | Web Farm | 10.10.100.0/24 |
| Development | Database | 10.10.101.0/24 |
| Development | Application | 10.10.102.0/24 |
| Development | Infrastructure | 10.10.103.0/24 |
| Production | Web Farm | 10.10.100.0/24 |
| Production | Application | 10.10.101.0/24 |
| Production | Database | 10.10.102.0/24 |
| Production | Infrastructure | 10.10.103.0/24 |

The network architects also prepare a network design for the Hyper-V environments as shown in the Network Design exhibit. (Click the Exhibit button.)



The implementation team reports a problem with IP addressing as shown in the Network

"A Composite Solution With Just One Click" - Certification Guaranteed 14 Microsoft 74-409 : Practice Test Error exhibit. (Click the Exhibit button.)



You need to ensure that the implementation team can implement the network design successfully.

For each of the following statements, select Yes if the statement is true. Otherwise, select No. Each correct selection is worth one point.

Yes

No



The implementation team must implement new port profiles for the development environment.



The implementation team must implement network virtualization based on the network design.



The implementation team must enable the Router Guard option on the virtual machines.

A.

B.

C.

D.

Correct Answer:

Section: (none)

Explanation

Explanation/Reference:

Yes

No



The implementation team must implement new port profiles for the development environment.



The implementation team must implement network virtualization based on the network design.



The implementation team must enable the Router Guard option on the virtual machines.

"A Composite Solution With Just One Click" - Certification Guaranteed 15 Microsoft 74-409 : Practice Test

QUESTION 14

A company has an Active Directory Domain Services (AD DS) environment. All domain controllers run Windows Server 2012 R2. The company also has a virtualization infrastructure that consists of two Hyper-V host servers. The host servers and all of the virtual machine (VMs) run Windows Server 2012 R2.

The company must deploy VMs by using file shares that use the Server Message Block (SMB) protocol. You create a file share. You must follow the principle of least privilege.

You need to implement the NTFS and share permissions required to use the file share.

Which objects should you grant permissions to?

A. Hyper-V service accounts and the LocalSystem account

B. LocalSystem and all Hyper-V administrators

C. computer objects for the VMs, the SYSTEM account, and all Hyper-V administrators

D. computer objects for the Hyper-V host servers, the SYSTEM account, and all Hyper-V administrators

Correct Answer: D

Section: (none)

Explanation

Explanation/Reference:

QUESTION 15

Your environment contains one Active Directory Domain Services (AD DS) domain. All domain controllers have Windows Server 2012 R2 installed. All domain controllers are virtualized domain controllers.

You design a disaster recovery strategy. You have the following requirements:

The domain controllers can be recovered in the event that a Hyper-V host server fails.

The AD DS domain must be restorable to a consistent state.

You must minimize the data loss.

You need to ensure that the domain controllers can be recovered in the event of a failure.

What should you do?

- A. Clone the domain controller that holds the PDC Emulator role to a different Hyper-V host server.
Schedule a Windows PowerShell job to run the Checkpoint-VM cmdlet on each virtual domain controller.
- B. Run Windows Azure Hyper-V Recovery Manager.
- C. On each guest operating system, run Windows Server Backup.
- D. on the host operating system, run Windows Server Backup.
- E. Schedule a Windows PowerShell job to back up each domain controller's virtual hard disk (VHD) file.

Correct Answer: A

Section: (none)

Explanation

Explanation/Reference:

QUESTION 16

A company has a server that has System Center 2012 R2 Virtual Machine Manager (VMM) installed. A specific user must be able to create logical networks in VMM. You need to grant the user the required permissions. What should you do?

- A. in VMM, grant the user the Administrator role.
- B. in VMM, create a self-service role that has the Deploy action assigned.
- C. in Server Manager, add the user to the local Administrators group.
- D. In VMM, grant the user the Tenant Administrator role.

Correct Answer: A

Section: (none)

Explanation

Explanation/Reference:

QUESTION 17

You administer the virtual machines and the Hyper-V host server for a large organization.

All Hyper-V virtual machines must start even when the host server does not have enough physical memory available.

You need to ensure that all Hyper-V virtual machines start.

What should you do?

- A. Configure the Hyper-V host server to use smart paging.
- B. Configure the virtual machines to run at high priority.
- C. Configure the Hyper-V host server to run at high priority.
- D. Configure the virtual machines to use dynamic memory.
- E. Configure the virtual machines as members of an availability set.
- F. Configure the Hyper-V host server as a member of an availability set.

Correct Answer: A

Section: (none)

Explanation

Explanation/Reference:

QUESTION 18

A company consolidates multiple data centers into a single centralized datacenter by using a Windows Server 2012 R2 server that has the Hyper-V role installed.

You must be able to support chargeback based on the usage of the following resources:

average CPU usage per virtual machine (VM)

average physical memory used by a VM over a period of time
highest amount of memory assigned to a VM over a period of time
highest amount of disk space assigned to a VM over a period of time

You need to track the resources without installing any additional tools.

Which tool should you use?

- A. Process Explorer
- B. Resource Metering
- C Reliability Monitor
- C. Resource Monitor

Correct Answer: B

Section: (none)

Explanation

Explanation/Reference:

QUESTION 19

A company has two offices in New York and one office in San Francisco. There is no shared storage between the San Francisco office and the New York headquarters. All offices are connected by a wide area network (WAN). The Hyper-V environment is configured as shown in the following table:

| Office | Hyper-V Host | Operating System | Number of Virtual Machines |
|-----------------------------|--------------|------------------------|----------------------------|
| New York headquarters | NYC-Host1 | Windows Server 2012 R2 | 3 |
| San Francisco branch office | SFC-Host1 | Windows Server 2012 R2 | 6 |
| New York branch office | NYC-Host2 | Windows Server 2012 R2 | 5 |

All virtual machines must be highly available.

You need to configure the environment.

What should you implement?

- A. a separate Hyper-V replica between NYC-Host1 and SFC-Host1
- B. a Hyper-V cluster that includes NYC-Host1, NYC-Host2, and SFC-Host1
- C. a Hyper-V cluster between NYC-Host1 and SFC-Host1
- D. a Hyper-V replica between NYC-Host1 and NYC-Host2 with an extended replica between NYC-Host1 and SFC-Host1

Correct Answer: D

Section: (none)

Explanation

Explanation/Reference:

QUESTION 20

A company has a new Hyper-V host server that runs Windows Server 2012 R2 Datacenter edition. You plan to deploy a new virtual machine (VM).

You must install Windows Server 2012 R2 Standard edition on the VM from a standard network adapter by using PXE boot. The VM must boot to a SCSI VHDX disk.

You need to create the VM.

What should you create?

- A. a storage pool that uses SCSI disks
- B. a Generation 1 VM
- C. a Generation 2 VM
- D. a virtual disk that uses the VHDX format

Correct Answer: C

Section: (none)

Explanation

Explanation/Reference:

QUESTION 21

You have a Windows Server 2012 R2 with the Hyper-V role installed. The host server hosts a virtual machine (VM) named NYC-VM. The virtual switches for the host server are configured as follows:

| Virtual Switch Name | Connection Type |
|---------------------|-----------------|
| EXT | External |
| INT | Internal |
| PRI | Private |

NYC-VM must meet the following requirements:

communicate with all of the VMs on the same virtualization host server
 communicate with the virtualization host server
 must NOT communicate with VMs on different virtualization host servers

You need to configure the virtual switch for NYC-VM.

What should you do?

- A. On NYC-VM, enable virtual LAN identification.
- B. Run the Windows PowerShell command `Connect-VMNetworkAdapter -VMName NYC- VM - SwitchName INT`.
- C. Connect NYC-VM to the EXT switch.

- D. Run the Windows PowerShell command `Connect-VMNetworkAdapter -VMName NYC- VM - SwitchName EXT`.

Correct Answer: A

Section: (none)

Explanation

Explanation/Reference:

QUESTION 22

A company has a Windows Server 2012 R2 server named NYC-HOST1 that has the Hyper-V role installed. The host server hosts two virtual machines named SALES1 and SALES2. NYC-HOST1 uses storage spaces with tiered storage. The storage spaces contain both solid state disks (SSDs) and 10,000 RPM Serial Attached SCSI (SAS) disks for .vhdx files. Each virtual machine runs on its own .vhdx file.

You plan to add new virtual machines each month. SALES1 and SALES2 must run at the highest possible performance at all times.

You need to configure the virtual machines.

What should you do?

- A. Add additional SSDs to the storage space that is occupied by SALES1 and SALES2.
- B. Replace the 10,000 RPM SAS disks with 15,000 RPM SAS disks.
- C. Move the .vhdx files from the storage spaces to individual SAS hard disks.
- D. pin the .vhdx files for SALES1 and SALES2 to the fast tier.

Correct Answer: D

Section: (none)

Explanation

Explanation/Reference:

QUESTION 23

A company has one Active Directory Domain Services (AD DS) forest that contains two domains. All servers run Windows Server 2012 R2. The company uses iSCSI storage and Fibre Channel storage.

You plan to deploy a single Hyper-V failover cluster that uses Cluster Shared Volumes (CSV). The cluster must include virtual machines from both domains.

You need to ensure that you can deploy a failover cluster.

What should you do?

- A. Join each Hyper-V host server to the same AD DS domain.
- B. Deploy clustered storage spaces.
- C. Deploy Serial Attached SCSI (SAS).
- D. Join each Hyper-V host server to different AD DS domains.

Correct Answer: A

Section: (none)

Explanation

Explanation/Reference:

QUESTION 24

A company has seven Windows Server 2012 R2 virtual machines (VMs). The VMs are running and are accessible over the network. You plan to copy a large .ISO file from the host server to each of the VMs.

The copy operations must meet the following requirements:

The VMs must remain accessible over the network during the copy operations. The copy operations must NOT use a network connection.

You need to configure the VMs. What should you do on each VM?

- A. Enable the Guest services integration service.
- B. Enable the Data Exchange integration service.
- C. Add a network adapter, and then enable the virtual machine queue (VMQ) option on the adapters.
- D. Set the value of the Smart Paging File Location property to %SYSTEMROOT%\temp.

Correct Answer: A

Section: (none)

Explanation

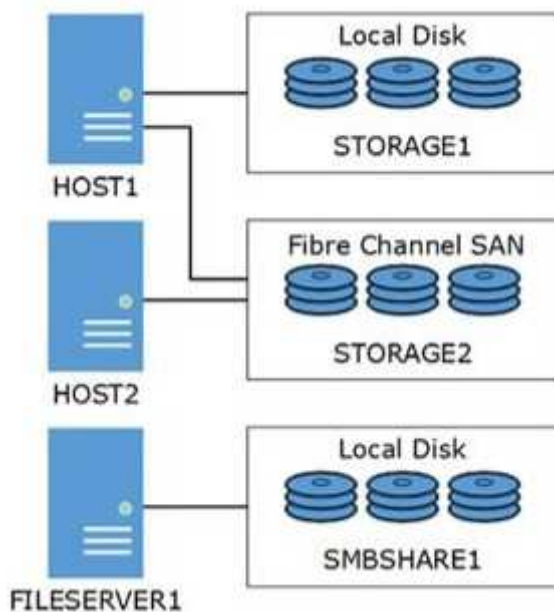
Explanation/Reference:

QUESTION 25

HOTSPOT

A company has a Hyper-V environment that includes three servers named HOST1, HOST 2, and FILESERVER1. HOST1 and HOST2 run Windows Server 2012 R2 that have the Hyper-V role installed. FILESERVER1 runs Windows Server 2008 R2 and has the File Services role installed. All of the hardware supports Offloaded Data Transfer (ODX).

The servers are configured as shown in the following diagram:



STORAGE1 is encrypted with BitLocker.

You need to support ODX for all of the virtual machines on HOST1.

Use the drop-down menus to complete each statement based on the information presented in the screenshot. Each correct selection is worth one point.

Which type of disk and controller should you use?

a disk that uses the VHD file format that is attached to an IDE controller
a disk that uses the VHDX file format that is attached to an IDE controller
a disk that uses the VHDX file format that is attached to a SCSI controller

Where should you place the virtual hard disk (VHD)?

STORAGE1
STORAGE2
SMB SHARE1

"A Composite Solution With Just One Click" - Certification Guaranteed 22 Microsoft 74-409 : Practice Test

- A.
- B.
- C.
- D.

Correct Answer:

Section: (none)

Explanation

Explanation/Reference:

Which type of disk and controller should you use?

a disk that uses the VHD file format that is attached to an IDE controller
a disk that uses the VHDX file format that is attached to an IDE controller
a disk that uses the VHDX file format that is attached to a SCSI controller

Where should you place the virtual hard disk (VHD)?

STORAGE1
STORAGE2
SMB SHARE1

QUESTION 26

You administer a Windows Server 2012 R2 server that has the Hyper-V role installed. The server hosts three virtual machines (VMs).

One of the VMs is managed by a security engineer. The security engineer must capture traffic on another VM that is running on the same server.

You need to ensure that the security engineer can access the network traffic information from the target VM.

Which networking feature should you enable?

- A. port mirroring
- B. NIC teaming
- C. protected network
- D. MAC address spoofing

Correct Answer: A

Section: (none)

Explanation

Explanation/Reference:

QUESTION 27

HOTSPOT

You plan to implement guest clustering that contains two virtual machines (VMs).

You review the following information from one of the VMs:

- The Validate File System test results in the Failover Clustering Validation Report, as shown in the Validation Report exhibit (Click the Exhibit button.)

| | | |
|-------------------|-----------------|-----------------|
| Validation Report | Features Wizard | Disk Management |
|-------------------|-----------------|-----------------|

Validate File System

Description: Validate that the file system on disks in shared storage is supported by failover clusters and Cluster Shared Volumes (CSVs). Failover cluster physical disk resources support NTFS, ReFS, FAT32, FAT, and RAW. Only volumes formatted as NTFS or ReFS are accessible in disks added as CSVs.

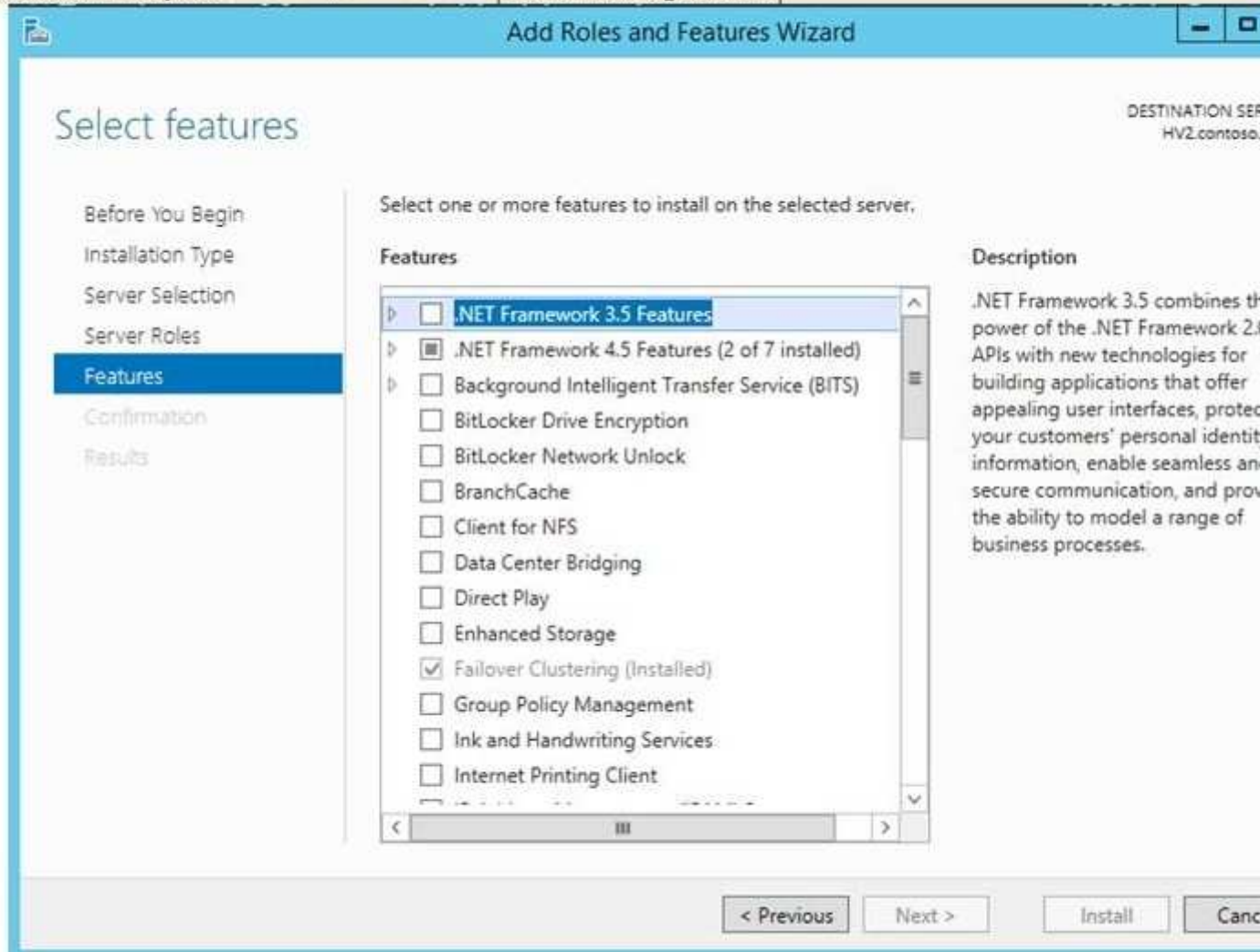
Start 9/5/2013 8:39:19 PM

No disks were found on which to perform cluster validation tests.

Start 9/5/2013 8:39:19 PM

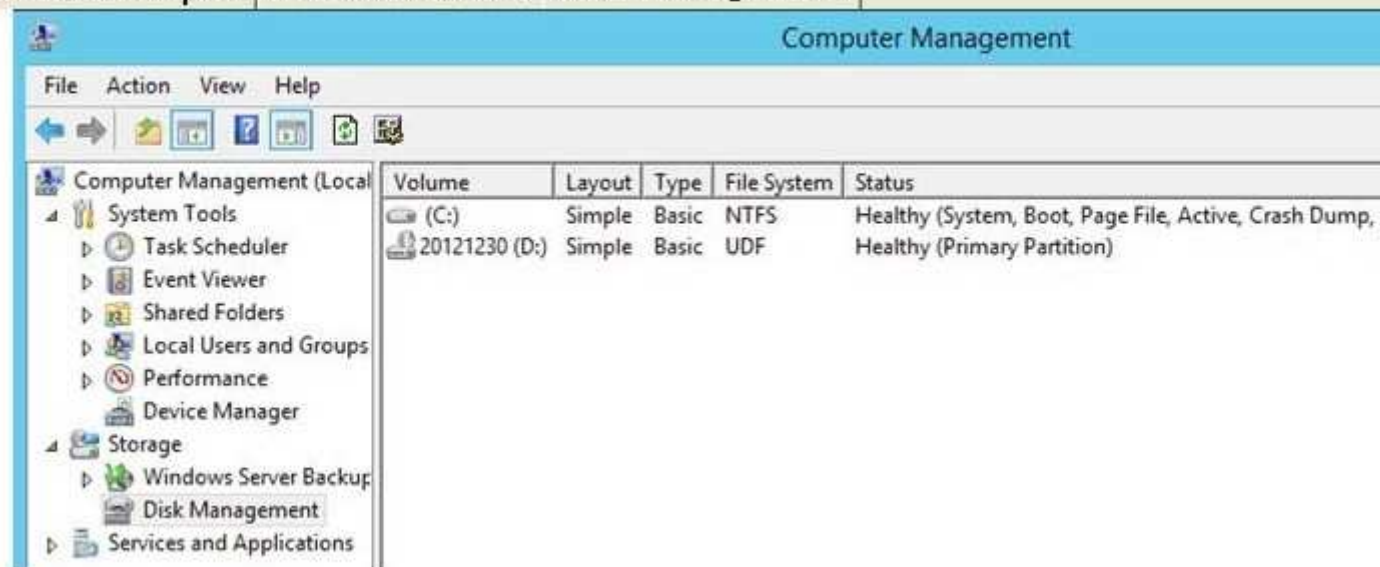
[Back to Summary](#)
[Back to Top](#)

- The Features page of the Add Roles and Features Wizard, as shown in the Features Wizard exhibit (Click the Exhibit button.)



• The disk management settings, as shown in the Disk Management exhibit (Click the Exhibit button.)

"A Composite Solution With Just One Click" - Certification Guaranteed 24 Microsoft 74-409 : Practice Test



You need to ensure that you can implement guest clustering.

For each of the following statements, select Yes if the statement is true. Otherwise, select No. Each correct selection is worth one point.

Yes No

- | | | |
|-----------------------|-----------------------|--|
| <input type="radio"/> | <input type="radio"/> | The VM has the required features installed. |
| <input type="radio"/> | <input type="radio"/> | The VM has the required shared storage type. |
| <input type="radio"/> | <input type="radio"/> | The VM has the required hardware installed. |

- A.
- B.
- C.
- D.

Correct Answer:

Section: (none)

Explanation

Explanation/Reference:

Yes No

- | | | |
|----------------------------------|----------------------------------|--|
| <input checked="" type="radio"/> | <input type="radio"/> | The VM has the required features installed. |
| <input type="radio"/> | <input checked="" type="radio"/> | The VM has the required shared storage type. |
| <input type="radio"/> | <input checked="" type="radio"/> | The VM has the required hardware installed. |

QUESTION 28

A Windows Server 2012 R2 Hyper-V host server has four network adapters that are connected to two different network switches, server contains a virtual machine named

NYC-WEB.

You have the following requirements:

increase the available bandwidth for NYC-WEB
implement network fault tolerance for NYC-WEB without modifying network switch configurations
use the least amount of administrative effort

You need to configure the Hyper-V environment. What should you do first?

- A. Enable NIC teaming. Configure the team to use Static Teaming mode.
- B. Enable NIC teaming. Configure the team to use Switch Independent mode.
- C. Enable Bandwidth Management on NYC-WEB.
- D. Run the Windows PowerShell command `Set-NetLbfoTeam -Name Team1 -TeamingMode Static`.

Correct Answer: B

Section: (none)

Explanation

Explanation/Reference:

QUESTION 29

A company has a Windows Server 2012 R2 server that has the Hyper-V role installed. The server hosts 12 virtual machines (VMs) that run Windows Server 2012 R2. The company plans to deploy System Center 2012 R2 Data Protection Manager (DPM).

The company has identified the following requirements for the DPM deployment:

allow files and folders on VMs to be recovered
allow recovery of data to a network share
minimize the number of DPM protection agents that you must deploy

You need to implement the backup solution.

Which two actions should you perform? Each correct answer presents part of the solution.

- A. Deploy a DPM server.
- B. Deploy the DPM protection agent to VMs.
- C. Add the Hyper-V role to the DPM server.
- D. Configure DPM to perform guest-level backups of the VMs.
- E. Configure DPM to perform host-level backups of the VMs.

Correct Answer: AC

Section: (none)

Explanation

Explanation/Reference:

Explanation: * DPM protection supports the following scenarios:

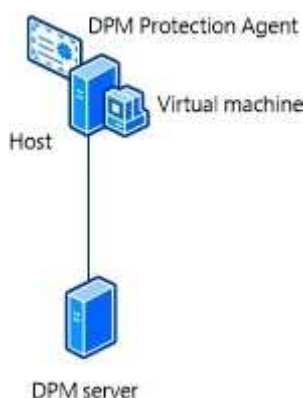
/ (this scenario) Protects virtual machines that are hosted on stand-alone servers that run Hyper-V and that use local or directly attached storage.

/ Protects virtual machines that run on a cluster. The cluster uses Cluster Shared Volumes (CSV) storage.

/Protects virtual machines that run on a stand-alone server or cluster and that use SMB 3.0 file server storage.

/Protects virtual machines that are running during a live migration.

* Example: Protection for virtual machines on a stand-alone server that is running Hyper-V



Hyper-V on Standalone

This configuration protects one or more virtual machines on a stand-alone host computer. Storage can be local on the host server, or directly attached to it, for example a hard drive, a storage area network (SAN) device, or a network attached storage (NAS) device. Alternatively, the host server might use SMB 3.0 storage on an alternate file server. The DPM protection agent must be installed on all hosts and on the file server if storage is hosted by using SMB 3.0.

Incorrect:

Not B: Would not minimize the number of Protection Agents.

QUESTION 30

You manage a virtualization environment that contains Windows Server 2012 R2 servers that have the Hyper-V role installed. You manage the host servers by using Virtual Machine Manager (VMM) in System Center 2012 R2.

You must monitor the virtualization environment, including all virtual machines and service instances.

You need to configure monitoring.

Which three actions should you perform? Each correct answer presents part of the solution.

- A. Import the VMM Management Pack and then deploy agents to the Hyper-V host servers and the VMM server. On the Hyper-V host server, enable agent proxy for the Operations Manager agent.
- B. In the VMM console, add the name of an Operations Manager server to the management group that will be used to monitor the virtualization infrastructure.
- C. On the VMM server, install the Operations Manager console.
- D. On the Operations Manager management server, enable Windows Remote Management (WinRM).
- E. Import the VMM Management Pack and then deploy agents to Hyper-V host servers and the VMM Server. On the VMM server, enable agent proxy for the Operations Manager agent.
- F. Configure the VMM server and the Active Directory computer accounts of the Hyper-V host servers to allow constrained delegation.

Correct Answer: ACF

Section: (none)

Explanation

Explanation/Reference:

Explanation: A: Step 2:

An Operations Manager agent is a service that is installed on a computer. The agent collects data, compares sampled data to predefined values, creates alerts, and runs responses. A management server receives and distributes configurations to agents on monitored computers.

C: (Step 1) The Operations Manager is a requirement. With System Center Operations Manager 2012 SP1, customers can now monitor Hyper-V Replica using a Management Pack available for free from the catalogue of SCOM.

QUESTION 31

DRAG DROP

You have a Windows Server 2012 R2 server that has the Hyper-V role installed. The

company has the following requirements for the Hyper-V host server:

Virtual machines (VMs) must only communicate with other VMs. You must be able to monitor all TCP/IP packets to and from VMs from the moment that VMs are able to communicate.

You must support a third-party program that uses the Network Driver Interface Specification (NDIS) API to monitor the TCP/IP packets between VMs.

You need to configure the environment.

Which three actions should you perform in sequence? To answer, move the appropriate actions from the list of actions to the answer area and arrange them in the correct order.

Disable the Microsoft Windows Filtering Platform switch extension.

Configure the VMs to use the internal virtual switch.

Create an internal virtual switch.

Create a private virtual switch.

Configure the VMs to use the private virtual switch.

Enable the Microsoft NDIS Capture switch extension on the private virtual switch.

- A.
- B.
- C.
- D.

Correct Answer:

Section: (none)

Explanation

Explanation/Reference:

Disable the Microsoft Windows Filtering Platform switch extension.

Configure the VMs to use the internal virtual switch.

Create an internal virtual switch.

Create a private virtual switch.

Configure the VMs to use the private virtual switch.

Enable the Microsoft NDIS Capture switch extension on the private virtual switch.

Create a private virtual switch.

Enable the Microsoft NDIS Capture switch extension on the private virtual switch.

Configure the VMs to use the internal virtual switch.

QUESTION 32

A company plans to create a Hyper-V test environment that will contain three virtual machines (VMs). The VMs are projected to grow 1 GB in size each day. The VMs will be configured as follows:

| Virtual Machine Name | Operating System | Server Role |
|----------------------|------------------------|----------------------------------|
| NYC-EX1 | Windows Server 2012 | Exchange Server 2013 |
| NYC-DC1 | Windows Server 2012 | Active Directory Domain Services |
| NYC-SQL1 | Windows Server 2008 R2 | SQL Server 2008 |

You must minimize the required amount of storage space by using the least amount of administrative effort.

You need to recommend a storage solution.

Which type of virtual disk type should you configure for each VM?

- A. differencing
- B. dynamically expanding
- C. fixed
- D. pass-through

Correct Answer: B

Section: (none)

Explanation

Explanation/Reference:

QUESTION 33

DRAG DROP

You administer the following Windows Server 2012 R2 Hyper-V environment:

| Server Name | Virtual Machine Datastore Size | Virtual Machines | Member of cluster |
|-------------|--------------------------------|--|-------------------|
| SERVER1 | 100 GB | VM-APP1 uses 75 GB | No |
| SERVER2 | 200 GB | VM-WEB1 uses 50 GB VM-WEB2 uses 50 GB VM-WEB3 uses 50 GB | Yes |
| SERVER3 | 200 GB | VM-WEB1 uses 50 GB VM-WEB2 uses 50 GB VM-WEB3 uses 50 GB | Yes |
| SERVER4 | 200 GB | VM-SQL1 uses 100 GB | No |

The environment also contains a computer named WORKSTATION1 that runs Windows 8.

You need to perform maintenance on SERVER1. You have the following requirements:

Perform live migration for VM-APP1.

Use one of the Hyper-V management tools on WORKSTATION1 to perform the live migration tasks.

You need to migrate VM-APP1.

Which three actions should you perform in sequence? To answer, move the appropriate actions from the list of actions to the answer area and arrange them in the correct order.

On all servers, configure virtual machines to use the Credential Security Support Provider (CredSSP).

Move VM-APP1 to the Hyper-V cluster.

On WORKSTATION1, run the Failover Cluster Manager snap-in and connect to SERVER1. Then, start the move wizard.

On WORKSTATION1, run Hyper-V Manager and connect to SERVER1. Then, start the move wizard.

On all servers, configure constrained delegation.

Move VM-APP1 to SERVER4.

- A.
- B.
- C.
- D.

Correct Answer:

Section: (none)

Explanation

Explanation/Reference:

On all servers, configure virtual machines to use the Credential Security Support Provider (CredSSP).

Move VM-APP1 to the Hyper-V cluster.

On WORKSTATION1, run the Failover Cluster Manager snap-in and connect to SERVER1. Then, start the move wizard.

On WORKSTATION1, run Hyper-V Manager and connect to SERVER1. Then, start the move wizard.

On all servers, configure constrained delegation.

Move VM-APP1 to SERVER4.

On all servers, configure constrained delegation.

On WORKSTATION1, run Hyper-V Manager and connect to SERVER1. Then, start the move wizard.

Move VM-APP1 to SERVER4.

QUESTION 34
HOTSPOT

You have an environment that contains the servers as shown in the following table:

| Name | Role | Operating System |
|----------|---|------------------------|
| VMM01 | System Center 2012 R2 Virtual Machine Manager | Windows Server 2012 R2 |
| Lib01 | Library Server | Windows Server 2012 R2 |
| Server01 | No Role Installed | Windows Server 2012 R2 |

You purchase a physical server that supports out-of-band management to deploy as a bare-metal Hyper-V host server.

Administrators must be able to deploy standard Hyper-V host server images to bare-metal computers by using the least amount of administrative effort.

You need to prepare the environment.

What should you use? To answer, select the appropriate option from each drop-down menu in the answer area.

| Server Name | Role, Feature, Tool or Profile |
|-------------|---|
| Server01 | <div><div></div><div>Web Server (IIS) server role System Preparation Tool (sysprep.exe) Network Load Balancing server feature Windows Deployment Services server role</div></div> |
| Lib01 | <div><div></div><div>a host profile only a host profile and drivers a host profile and a generalized file that uses the VHDX file format a host profile, drivers, and a generalized file that uses the VHDX file format</div></div> |

- A.
- B.
- C.
- D.

Correct Answer:

Section: (none)

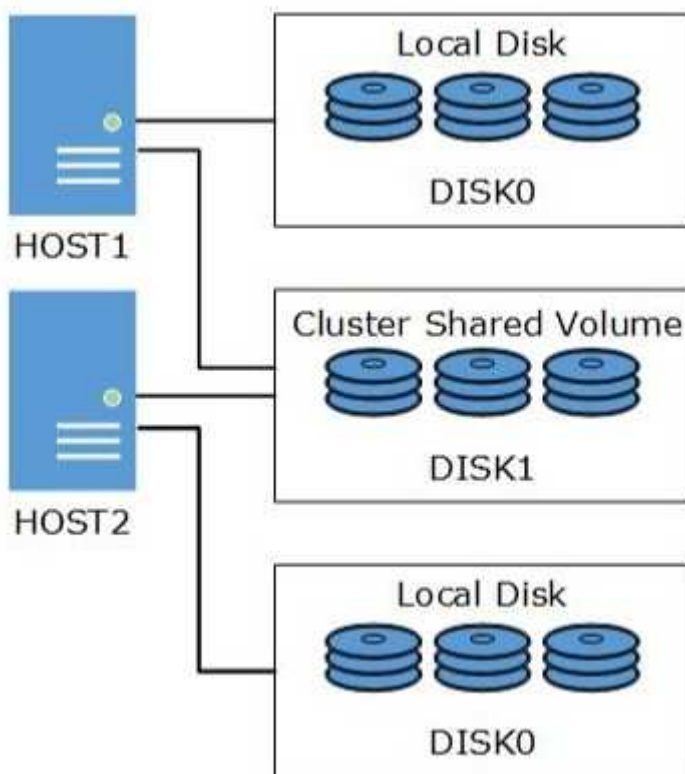
Explanation

Explanation/Reference:

| Server Name | Role, Feature, Tool or Profile |
|-------------|---|
| Server01 | <div> <div></div> <div> Web Server (IIS) server role System Preparation Tool (sysprep.exe) Network Load Balancing server feature Windows Deployment Services server role </div> </div> |
| Lib01 | <div> <div></div> <div> a host profile only a host profile and drivers a host profile and a generalized file that uses the VHDX file format a host profile, drivers, and a generalized file that uses the VHDX file format </div> </div> |

QUESTION 35

You administer two servers that run Windows Server 2012 R2. Both servers are part of a Hyper-V cluster. The servers are configured as shown in the following diagram:



All of the .vhdx files are stored on DISK1.

You observe that the physical input/output (I/O) performance degrades when .vhdx files are accessed.

You need to improve performance.

Which two actions should you perform? Each correct answer presents part of the solution.

- A. Run the Windows PowerShell command Set-BCCache 10.
- B. On each host server, enable write caching for DISK1.
- C. Run the Windows PowerShell command Get-ClusterSharedVolumeBlockCacheSizeInMB = 0.
- D. Run the Windows PowerShell command (Get-Cluster).SharedVolumeBlockCacheSizeInMB = 512.

- E. Run the Windows PowerShell command `Get-ClusterSharedVolume "Disk1" | Set- ClusterParameter CsvEnableBlockCache 1`.
- F. On each host server, disable write caching for DISK0.
"A Composite Solution With Just One Click" - Certification Guaranteed 33 Microsoft 74-409 : Practice Test

Correct Answer: DE

Section: (none)

Explanation

Explanation/Reference:

Explanation: D: Configuring CSV Cache
Windows Server 2012 R2

QUESTION 36

Open an elevated Windows PowerShell prompt

- A.
- B.
- C.
- D.

Correct Answer:

Section: (none)

Explanation

Explanation/Reference:

QUESTION 37

Define the size of the size of the cache to be reserved (example of setting to 1 GB)

(Get-Cluster). BlockCacheSize = 1024

Note:

* There are two configuration settings that allow you to control CSV Cache.

E: `CsvEnableBlockCache` This is a private property of the cluster Physical Disk resource. It allows you to enable CSV Cache on an individual disk. This gives you the flexibility to configure cache for read intensive VMs running on some disks, while allowing you to disable and prevent random I/O on other disks from purging the cache. For example parent VHD's with high reads you would enable caching on Disk1, and high writes for differencing disks the CSV cache could be disabled on Disk2. The default setting is 0 for disabled, setting to a value of 1 enables CSV Block Cache on that disk. Note: In Windows Server 2012 R2 this property has been renamed to `EnableBlockCache` and is Enabled by default.

D: `SharedVolumeBlockCacheSizeInMB` This is a cluster common property that allows you to define how much memory (in megabytes) you wish to reserve for the CSV Cache on each node in the cluster. If a value of 512 is defined, then 512 MB of system memory will be reserved on each node in the Failover Cluster. Configuring a value of 0 disables CSV Block Cache. Note: In Windows Server 2012 R2 this property has been renamed to `BlockCacheSize`.

* The main new features of the VHDX format are:

/ Support for virtual hard disk storage capacity of up to 64 TB. / Protection against data corruption during power failures by logging updates to the VHDX metadata structures.
/ Improved alignment of the virtual hard disk format to work well on large sector disks.

- A.
- B.
- C.
- D.

Correct Answer:

Section: (none)

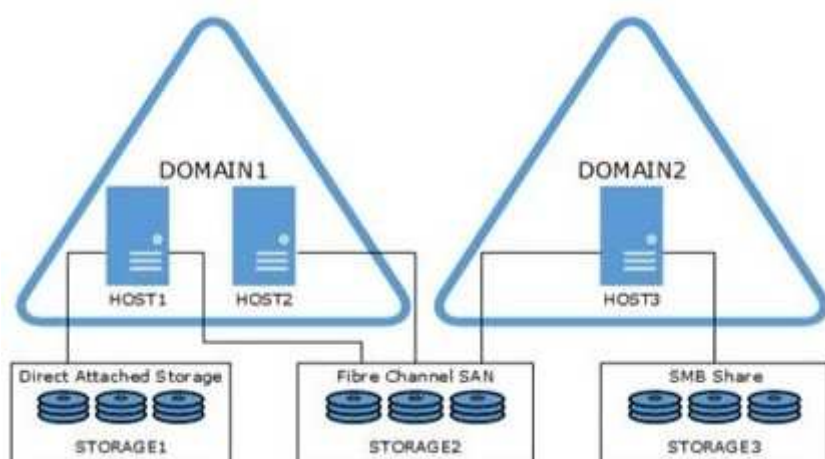
Explanation

Explanation/Reference:

QUESTION 38

HOTSPOT

A company has a Windows Server 2012 R2 Hyper-V environment that includes two separate Active Directory Domain Services (AD DS) domains. The environment also has three servers named HOST1, HOST2, and HOST3 that have the Hyper-V role installed. HOST1 and HOST2 are configured as a failover cluster. The environment is configured as shown in the following diagram:



You plan to deploy two new virtual machines named VM-Server1 and VM-Server2. You have the following requirements:

Deploy both virtual machines as a failover cluster. Utilize virtual hard disk (VHD) sharing for the cluster. The virtual machines must survive a host server hardware failure.

You need to deploy the virtual machines.

Use the drop-down menus to complete each statement based on the information presented in the screenshot. Each correct selection is worth one point.

Where should you place the virtual machines?

Place VM-Server1 on HOST1. Place VM-Server2 on HOST2.
Place VM-Server1 on HOST1. Place VM-Server2 on HOST3.
Place VM-Server1 on HOST2. Place VM-Server2 on HOST3.

Where should you place the shared VHD?

STORAGE1
STORAGE2
STORAGE3

"A Composite Solution With Just One Click" - Certification Guaranteed 35 Microsoft 74-409 : Practice Test

- A.
- B.

- C.
- D.

Correct Answer:

Section: (none)

Explanation

Explanation/Reference:

Where should you place the virtual machines?

Place VM-Server1 on HOST1. Place VM-Server2 on HOST2
Place VM-Server1 on HOST1. Place VM-Server2 on HOST3.
Place VM-Server1 on HOST2. Place VM-Server2 on HOST3.

Where should you place the shared VHD?

STORAGE1
STORAGE2
STORAGE3

QUESTION 39

DRAG DROP

You administer a Windows Server 2012 R2 server that has the Hyper-V role installed. The host server has the following configuration:

| Server | Switch | VLAN ID | Description |
|------------|----------------|---------|------------------------|
| VM-SERVER1 | VirtualSwitch1 | 30 | Lab Environment |
| VM-SERVER2 | VirtualSwitch2 | 50 | Production Environment |

You deploy a new lab virtual machine named VM-SERVER3.

You need to ensure that VM-SERVER3 communicates only with VM-SERVER1.

Which three actions should you perform in sequence? To answer, move the appropriate actions from the list of actions to the answer area and arrange them in the correct order.

On VM-SERVER3, add a virtual network adapter and associate it with VirtualSwitch1.

Run the Windows PowerShell cmdlet **Enable-VMSwitchExtension**.

On VM-SERVER3, add a virtual network adapter and associate it with VirtualSwitch2.

Enable virtual LAN (VLAN) identification.

Configure a virtual LAN (VLAN) ID of 50.

Configure a virtual LAN (VLAN) ID of 30.

- A.
- B.
- C.
- D.

Correct Answer:

Section: (none)

Explanation

Explanation/Reference:

"A Composite Solution With Just One Click" - Certification Guaranteed 36 Microsoft 74-409 : Practice Test

On VM-SERVER3, add a virtual network adapter and associate it with VirtualSwitch1.

Run the Windows PowerShell cmdlet **Enable-VMSwitchExtension**.

On VM-SERVER3, add a virtual network adapter and associate it with VirtualSwitch2.

Enable virtual LAN (VLAN) identification.

Configure a virtual LAN (VLAN) ID of 50.

Configure a virtual LAN (VLAN) ID of 30.

On VM-SERVER3, add a virtual network adapter and associate it with VirtualSwitch1.

Enable virtual LAN (VLAN) identification.

Configure a virtual LAN (VLAN) ID of 30.

QUESTION 40

You administer the Hyper-V environment for a large organization. The organization uses Windows Server 2012 R2 servers that have the Hyper-V role installed and System Center 2012 R2 Virtual Machine Manager

(VMM). You create a virtual machine template that has the Operations Manager 2012 R2 agent pre-installed.

You receive the following Operations console alert for all domain controller VMs that use the VM template:

The script 'AD Replication Partner Op Master Consistency' Failed to create object. 'McActiveDir.ActiveDirectory'. This is an unexpected error.

The error returned was 'ActiveX component can't create object' (OxIAD)

The Active Directory Management Pack Objects (OOMADs) components are not installed on the Domain Controller. These components are required for the monitoring scripts to run successfully. See Alert Knowledge for additional details.

You need to correct the issue for the virtual machines that use the template.

What should you do?

- A. Configure the agent to run as a user account that is a member of the Domain Admins security group.
- B. In the Administration pane on the Operations console, create a Windows Run As Account containing a user account that is a member of the Domain Admins security group. Associate this Run As Account with the AD MP Account Run As Profile.
- C. in the Administration pane on the Operations Console, find the affected agent-managed computers and enable agent proxy.
- D. Install the Active Directory Management Pack helper object on the managed computers.

Correct Answer: D

Section: (none)

Explanation

Explanation/Reference:

QUESTION 41

You administer three Windows Server 2012 R2 servers named Server1, Server2, and Server3. The servers are configured as follows:

| Server Name | Role | Location |
|-------------|---------------|-------------------|
| Server1 | Hyper-V | local data center |
| Server2 | Hyper-V | Windows Azure |
| Server3 | File Services | Windows Azure |

Each virtual machine on Server1 has a 50-TB logical unit number (LUN) to store data. There is limited bandwidth between the local data center and Windows Azure.

You have the following business continuity requirements:

Virtual machines (VMs) on Server1 must be available within 30 minutes of an unexpected failure. VMs on Server1 must be available if the local datacenter is no longer available.

You need to configure the environment.

What should you do?

- A. Implement live migration from Server1 to Server2.
- B. Configure the VMs to use a checkpoint location on Server3. Then, create a daily snapshot.
- C. Enable Hyper-V replication between Server1 and Server2.
- D. Implement quick storage migration from Server1 to Server2.

Correct Answer: C

Section: (none)

Explanation

Explanation/Reference:

QUESTION 42

You are the virtualization administrator for an organization that manages private and public cloud-based resources. The organization uses Windows Server 2008 R2 SP1 Hyper-V. All Hyper-V host servers are configured as nodes in a four-node cluster. The organization also uses System Center 2012 R2.

Operating system updates to each host server require a system reboot.

You need to ensure that the virtual machines remain online during any reboots required by the updates.

What should you do?

- A. Apply updates by using the Virtual Machine Servicing Tool (VMST).
- B. Configure orchestrated updates of Hyper-V host clusters in System Center 2012 R2 Virtual Machine Manager (VMM).
- C. Implement cluster-aware updating with the Cluster-Aware Updating (CAU) wizard.
- D. In System Center 2012 R2 Configuration Manager, add all of the servers to a collection. Deploy updates to the collection.

Correct Answer: B

Section: (none)

Explanation

Explanation/Reference:

QUESTION 43

You administer four servers that run Windows Server 2012 R2. The servers are part of a four-node Hyper-V cluster. You also have a file server cluster. All four Hyper-V nodes and the file server cluster have access to a storage area network (SAN) that is administered by a SAN administrator.

You have the following requirements:

The SAN administrator must retain control over which servers have access to the SAN logical unit numbers (LUNs).

The SAN administrator must be able to control the zoning for the SAN environment at the individual guest virtual machine level.

You need to create the virtualized storage environment.

What should you do?

- A. Implement virtual Fibre Channel adapters by using direct LUNs.
- B. Create Cluster Shared Volumes (CSVs) by using shared .vhdx files.
- C. Create Cluster Shared Volumes (CSVs) by using pass-through disks.
- D. Scale out the file server by using Server Message Block (SMB) 3.0.

Correct Answer: A

Section: (none)

Explanation

Explanation/Reference:

QUESTION 44

DRAG DROP

You have a Windows Server 2012 R2 server that has the Hyper-V role installed.

The company has the following requirements for the Hyper-V host server:

Virtual machines (VMs) must only communicate with other VMs and the Hyper-V host server.

You must be able to monitor all TCP/IP packets to and from VMs from the moment that VMs are able to communicate.

You must support a third-party program that uses the Network Driver Interface Specification (NDIS) API to monitor the TCP/IP packets between VMs.

You need to configure the environment.

Which three actions should you perform in sequence? To answer, move the appropriate actions from the list of actions to the answer area and arrange them in the correct order.

Create an internal virtual switch.

Create a private virtual switch.

Enable the Microsoft NDIS Capture switch extension on the internal virtual switch.

Configure the VMs to use the private virtual switch.

Disable the Microsoft Windows Filtering Platform switch extension.

Configure the VMs to use the internal virtual switch.

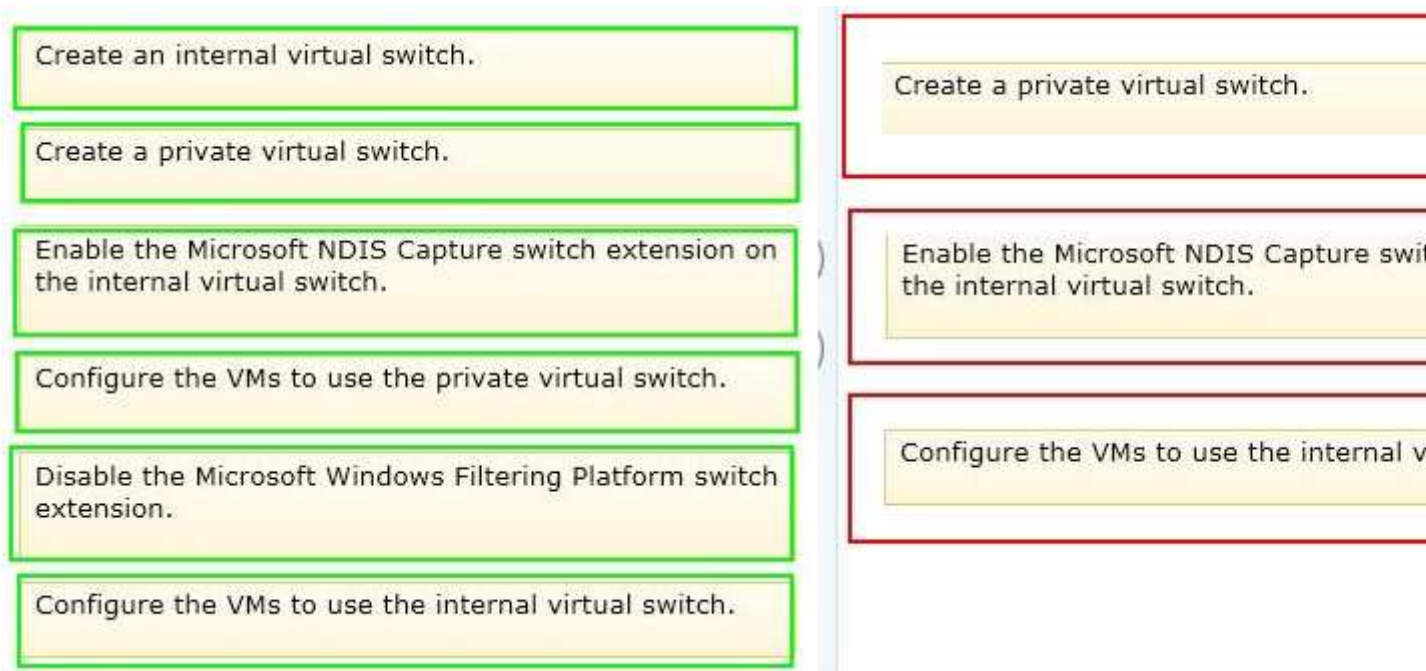
- A.
- B.
- C.
- D.

Correct Answer:

Section: (none)

Explanation

Explanation/Reference:



QUESTION 45

You administer a server that runs Windows Server 2012 R2 with the Hyper-V role installed. You plan to deploy a new virtual machine (VM) to the server. The data stored by the VM doubles each month.

You have the following requirements:

The virtual hard disk (VHD) must minimize the storage space requirements. Changes to the VHD must NOT require user intervention.

You need to create the VHD. What should you create?

- A. a dynamically expanding file that uses the VHD file format
- B. a file that uses the VSV file format for the data LUN
- C. a differencing file that uses the VHD file format
- D. a differencing file that uses the VHDX file format

Correct Answer: C

Section: (none)

Explanation

Explanation/Reference:

QUESTION 46

You administer a Windows Server 2012 R2 server that has the Hyper-V role installed. You plan to test an update to a virtual machine (VM) in a production environment. You must meet the following requirements:

migrate the VM to another Hyper-V host as quickly as possible ensure that the VM configuration is preserved after the migration is complete

You need to migrate the virtual machine. What should you do first?

- A. Create a checkpoint of the VM.
- B. Run the Windows PowerShell cmdlet Export-VMSnapshot.
- C. Run the Windows PowerShell cmdlet New-VirtualDiskClone.
- D. Export the VM.

Correct Answer: D

Section: (none)

Explanation

Explanation/Reference:

QUESTION 47

A company has servers that run Windows Server 2012 R2. The company has one Active Directory Domain Services (AD DS) domain.

A user reports that USB devices are not redirected when he uses the Virtual Machine Connection tool to connect to a virtual machine USB device redirection works for other users that connect to this VM.

You need to ensure that USB devices are redirected for all users when they connect to this VM.

What should you do?

- A. Add the user as a member of the Administrators group on the VM.
- B. Ensure that the Allow enhanced session mode setting is set to Enabled on the VM.
- C. Ensure that the Remote Desktop Services service is running on the VM.
- D. Add the user as a member of the Administrators group on the AD DS domain.

Correct Answer: A

Section: (none)

Explanation

Explanation/Reference:

QUESTION 48

Contoso, Ltd. has a Windows Server 2012 R2 server with the Hyper-V role installed. Contoso has a virtual machine named CVM1. The company uses System Center 2012 R2 Virtual Machine Manager (VMM) to manage the environment.

Contoso acquires Fabrikam, Inc. Fabrikam has a Windows Server 2012 R2 server with the Hyper-v role installed.

CVM1 must be able to communicate with a virtual machine named FVM2 on a non-routable subnet in the Fabrikam Hyper-V environment

You need to ensure that CVM1 can communicate with FVM2.

Which technology should you implement?

- A. Remote Desktop (RD) Gateway
- B. Windows Network Load Balancing (WNLB)
- C. Windows Server Gateway
- D. Reverse Proxy Server

Correct Answer: B

Section: (none)

Explanation

Explanation/Reference:

QUESTION 49

A company plans to create a Hyper-V environment that will contain three virtual machines (VMs). A limited amount of storage space is available to host the VMs. The VMs will be configured as follows:

| Virtual Machine Name | Operating System | Server Role |
|----------------------|------------------------|----------------------------------|
| NYC-EX1 | Windows Server 2012 | Exchange Server 2013 |
| NYC-DC1 | Windows Server 2012 | Active Directory Domain Services |
| NYC-SQL1 | Windows Server 2008 R2 | SQL Server 2008 |

You must maximize disk performance.

You need to recommend a storage solution.

Which type of virtual disk type should you configure for each VM?

- A. pass-through
- B. fixed
 - C dynamically expanding
- C. differencing

Correct Answer: B

Section: (none)

Explanation

Explanation/Reference:

QUESTION 50

A company has the following servers:

| Server Name | Description |
|-------------|---|
| SERVER1 | System Center 2012 R2 Virtual Machine Manager |
| SERVER2 | Hyper-V Host Server |
| SERVER3 | File Server |

You are implementing the virtualization storage.

You need to assign Server Message Block (SMB) 3.0 file shares to the Hyper-V host servers.

Which three actions should you perform? Each answer presents part of the solution.

- A. Assign the file share to SERVER2.
- B. Add SERVER3 as a storage device.
- C. Assign the file share to SERVER1.
- D. Add SERVER2 as a storage device.
- E. Create a file share on SERVER3.
- F. Create a file share on SERVER2.

Correct Answer: ABE

Section: (none)

Explanation

Explanation/Reference:

Explanation: B: Step 1: Add the file server (server3) as a storage device. Add a storage device--As a first step, add a storage device or Windows-based file server to the VMM console.

E: Step 2: Create a file share on the file server (server3). Create a file share--Create a file share on the Windows-based file server.

A: Step 3: Assign the share to the Host server (Server2) Assign the share--Assign the share to a virtual machine host or cluster.

QUESTION 51

An organization uses System Center 2012 R2 Data Protection Manager (DPM).

Backups of virtual machines that are hosted on local volumes complete successfully. Backups of virtual machines that are hosted on storage area network (SAN) volumes fail. You receive the following error message in the Windows Event Log:

Backup failed with the following error

An error occurred:

Writer 'Microsoft Hyper-V VSS Writer' reported an error: 'VSS_WS_FAILED_AT_FREEZE'. Check the application component to verify it is in a valid state for the operation.

You need to ensure that all backups can complete successfully.

What should you do?

- A. On the Cluster Shared Volume (CSV), grant administrator rights to the DPM server computer account.
- B. On all Windows servers in the environment, enable the Volume Shadow Copy Service (VSS).
- C. Install and configure the Volume Shadow Copy Service (VSS) hardware provider from the SAN vendor.
- D. On virtual machine files hosted on the Cluster Shared Volume (CSV), grant

Correct Answer: C

Section: (none)

Explanation

Explanation/Reference:

QUESTION 52

You administer two Windows Server 2012 R2 servers that have the Hyper-V role installed. You use System Center 2012 Virtual Machine Manager (VMM) to manage the Hyper-V host servers.

You need to create a server lab environment. The lab servers have the following requirements:

All of the lab servers must be virtual zed.

All of the lab servers must be on an isolated network. All of the lab servers must be able to communicate with each other.

You need to configure networking for the lab environment.

What should you do?

- A. Create a logical switch.
- B. Create a media access control (MAC) pool.
- C. Add a load balancer.
- D. Create a private virtual LAN (PVLAN) logical network.

Correct Answer: D

Section: (none)

Explanation

Explanation/Reference:

QUESTION 53

You administer a Windows Server 2012 R2 server that has the Hyper-V role installed. You deploy a new virtual machine. You add two virtual network adapters to the virtual machine.

You need to ensure that the virtual machine maintains network connectivity if one virtual network adapter fails.

What should you do?

- A. Run the Windows PowerShell cmdlet Enable-VMReplication.
- B. Enable Dynamic Host Configuration Protocol (DHCP) Guard.
- C. Run the Windows PowerShell cmdlet Set-VMHost.
- D. Run the Windows PowerShell cmdlet Set-VMNetworkAdapter.

Correct Answer: D

Section: (none)

Explanation

Explanation/Reference:

QUESTION 54

DRAG DROP

You administer a Windows Server 2012 R2 server with the Hyper-V role installed.

You plan to integrate the Hyper-V host server with the existing storage infrastructure.

You need to configure all virtual machines (VMs).

Which three actions should you perform in sequence? To answer, move the appropriate actions from the list of actions to the answer area and arrange them in the correct order.

Associate the virtual network adapter to Switch1.

Associate the virtual Fibre Channel adapter to Switch1.

Add a new virtual Fibre Channel adapter to the VM.

Add a new virtual network adapter to the VM.

Create a new internal virtual switch named Switch1.

Create a new virtual Fibre Channel storage area network (SAN) named Switch1.

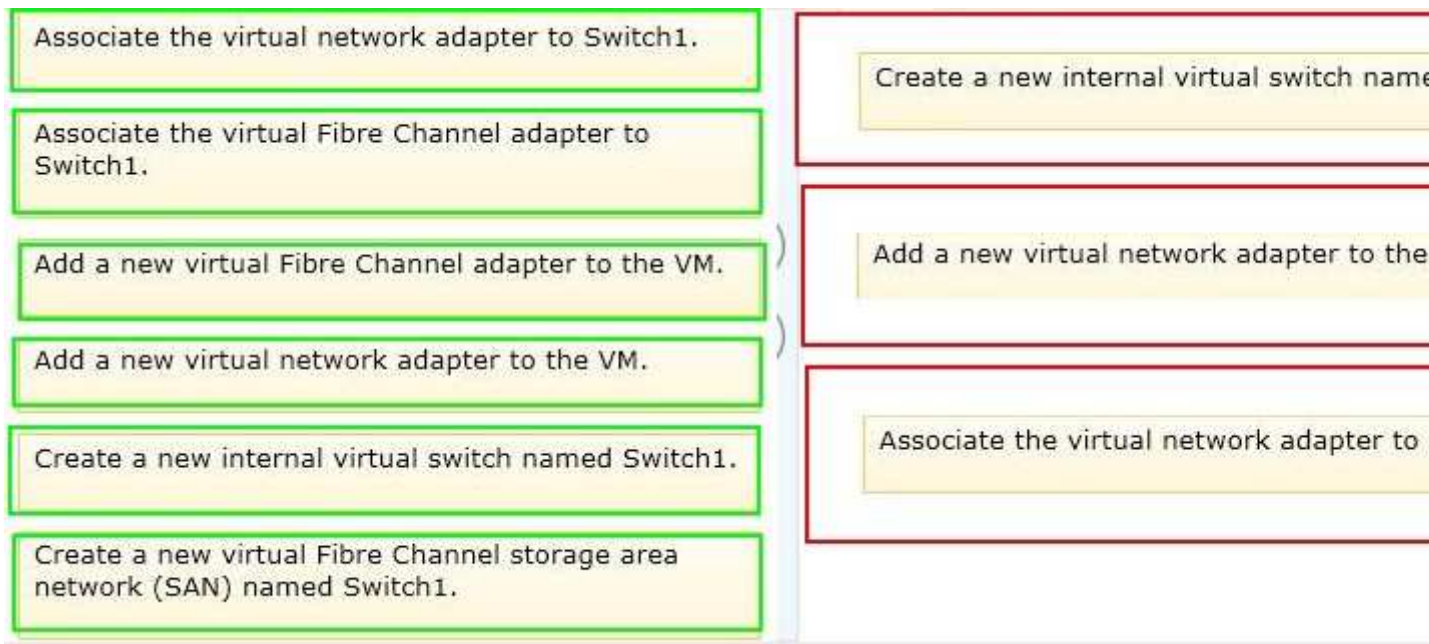
- A.
- B.
- C.
- D.

Correct Answer:

Section: (none)

Explanation

Explanation/Reference:



QUESTION 55

A company has Active Directory Domain Services (AD DS) domain controllers that run Windows Server 2012 R2.

You prepare a disaster recovery plan for Active Directory. You have the following requirements:

The domain controller restore process must complete as quickly as possible. After the restore process completes, the Active Directory database on the domain controller must be brought up to date by using replication.

You need to implement the disaster recovery plan.

What should you do?

- A. Authoritatively restore the domain controllers by using the ntdsutil.exe tool.
- B. Restore the domain controllers by using the Active Directory Recycle Bin.
- C. Back up and restore the domain controllers by using the wbadmin.exe tool.
- D. Back up and restore the domain controllers by using the ldp.exe tool.

Correct Answer: C

Section: (none)

Explanation

Explanation/Reference:

QUESTION 56

You have three Windows Server 2012 R2 servers that are set up as a Hyper-V cluster. You use System Center 2012 R2 Virtual Machine Manager to manage the Hyper-V environment.

Users report that when a Hyper-V host server becomes overloaded, the performance of the virtual machines is unacceptable.

You need to analyze workloads and automatically migrate virtual machines from overloaded host servers to host clusters that have available capacity.

What should you configure?

- A. Performance and Resource Optimization (PRO)
- B. Placement Rules

- C. shared .vhdx file
- D. Dynamic Optimization

Correct Answer: D

Section: (none)

Explanation

Explanation/Reference:

QUESTION 57

You administer two Windows 2012 R2 servers that have the Hyper-V role installed. You plan to deploy a new Hyper-V cluster. The cluster instance must NOT be added to Active Directory. You need to deploy the cluster. What should you do?

- A. Run the Windows PowerShell cmdlet New-Cluster. Specify DNS for the AdministrativeAccessPoint parameter.
- B. Run the Windows PowerShell cmdlet New-Cluster. Specify Forest for the AdministrativeAccessPoint parameter.
- C. Run the Windows PowerShell cmdlet Get-Cluster. Specify DNS for the Domain parameter.
- D. Run the Windows PowerShell cmdlet New-Cluster. Specify ActiveDirectoryAndDNS for the AdministrativeAccessPoint parameter.

Correct Answer: A

Section: (none)

Explanation

Explanation/Reference:

QUESTION 58

A company has a server that runs Windows Server 2012 R2. The Hyper-V role is installed on the server. The server has virtual machines (VMs) that run Windows Server 2012 R2.

You create two VMs. You also create four virtual hard disks. Two of the virtual hard disks use the VHD file format and two use the VHDX file format.

You plan to create a failover cluster by using the two VMs on the Hyper-V host server.

You need to prepare the storage for the VMs.

What should you do?

- A. Enable virtual hard disk sharing for one of the VHDX-based hard disks.
- B. Run the Windows PowerShell cmdlet Optimize-VHD against the VHD-based hard disks.
- C. Enable virtual hard disk sharing for one of the VHD-based hard disks.
- D. Run the Windows PowerShell cmdlet Optimize-VHD against the VHDX-based hard disks.

Correct Answer: A

Section: (none)

Explanation

Explanation/Reference:

QUESTION 59

A company has a Windows Server 2012 R2 server that has the Hyper-V role installed. The server has a single processor and a single 10-gigabit network interface card (NIC). 12 virtual machines (VMs) run on the server.

You need to configure Hyper-V to allow higher network throughput and reduce processing overhead related

to network operations. What should you do?

- A. Run the Windows PowerShell command `Set-VMNetworkAdapter -VmqWeight 0` on the VMs.
- B. In Hyper-V Manager, disable the protected network option for all NICs on the VMs.
- C. In Hyper-V Manager, enable the Single Root I/O Virtualization (SR-IOV) option on the VMs.
- D. Disable Internet Protocol security (IPsec) task offloading on the VMs.

Correct Answer: A

Section: (none)

Explanation

Explanation/Reference:

QUESTION 60

A company has a highly-secure network infrastructure environment. All servers in the environment run Windows Server 2012 R2.

You must create a new virtual machine (VM) that meets the following requirements:

The VM must minimize the risk that unauthorized firmware will run when the VM starts.
The VM must load the operating system only if all operating system files have a valid signature.

You need to create the new VM. What should you do?

- A. Create a Generation 2 VM and disable Secure Boot.
- B. Create a Generation 1 VM and use a synthetic network adapter.
- C. Create a Generation 1 VM and enable Secure Boot.
- D. Create a Generation 2 VM with the default settings.

Correct Answer: D

Section: (none)

Explanation

Explanation/Reference:

QUESTION 61

You are the virtualization administrator for an organization that manages private and public cloud resources.

The organization has a Windows Azure subscription. You plan to move virtual machines to Windows Azure Infrastructure as a Service (IaaS) by using System Center 2012 R2 App Controller.

You need to create a virtual machine template that allows virtual machines to be moved from Hyper-V to Windows Azure.

What should you do?

- A. Create a new virtual machine that uses a .vhd file. Run the Sysprep tool on the virtual machine.
- B. Create a new Generation 2 virtual machine that uses a .vhdx file that is attached to a SCSI controller. Run the Sysprep tool on the virtual machine.
- C. Create a new virtual machine that uses a .vhdx file. Run the Sysprep tool on the virtual machine.
- D. Create a virtual machine by using a differencing disk. Use the Clone a virtual machine option to create new virtual machines.

Correct Answer: A

Section: (none)

Explanation

Explanation/Reference:

QUESTION 62
DRAG DROP

You are the virtualization administrator for an organization. You manage a virtual machine (VM) by using System Center 2012 R2 Virtual Machine Manager. The VM is in a running state. You plan to use the System Preparation (Sysprep) tool to create a virtual machine template from the VM.

You need to save a copy of the VM before you run the Sysprep tool.

Which actions should you take? To answer, drag the appropriate actions to the correct locations in the answer area. Each action may be used once, more than once, or not at all. You may need to drag the split bar between panes or scroll to view content.

| |
|-------------------|
| pause |
| shut down |
| create checkpoint |
| create clone |
| store in library |

| | Action |
|-----------------------------|--------|
| Action to perform on the VM | |
| Operation to copy the VM | |

- A.
- B.
- C.
- D.

Correct Answer:
Section: (none)
Explanation

Explanation/Reference:

| |
|-------------------|
| pause |
| shut down |
| create checkpoint |
| create clone |
| store in library |

| | Action |
|-----------------------------|--------------|
| Action to perform on the VM | shut down |
| Operation to copy the VM | create clone |

QUESTION 63
DRAG DROP

A company uses System Center 2012 R2 Virtual Machine Manager (VMM) to manage their Hyper-V environment. The VMM environment has two host groups named Dev and Prod.

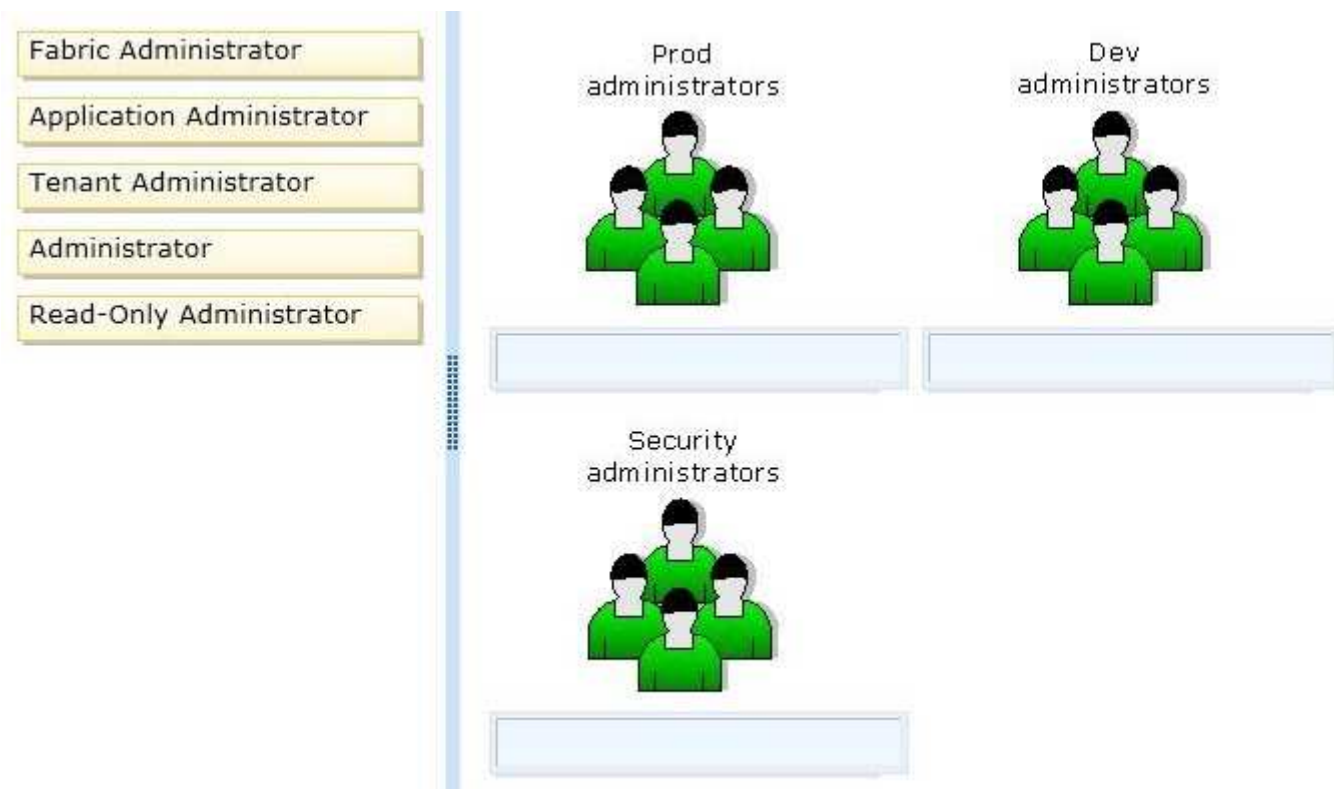
The Hyper-V environment has the following requirements:

Administrators of the Prod host group must be able to manage virtual machines (VMs) and perform all VMM administrative tasks only within the Prod host group. Administrators of the Dev host group must be

able to manage VMs and perform all VMM administrative tasks only within the Dev host group. Administrators of the Dev host group must be able to provision new Hyper-V host servers from physical computers for the Dev host group. The security administrators must be able to add user objects to the Administrator role in VMM. All delegation must adhere to the principle of least privilege.

You need to configure the user role profiles for each host group.

Which user role profiles should you assign? To answer, drag the appropriate user role profile to the correct user group. Each user role profile may be used once, more than once, or not at all. You may need to drag the split bar between panes or scroll to view content.



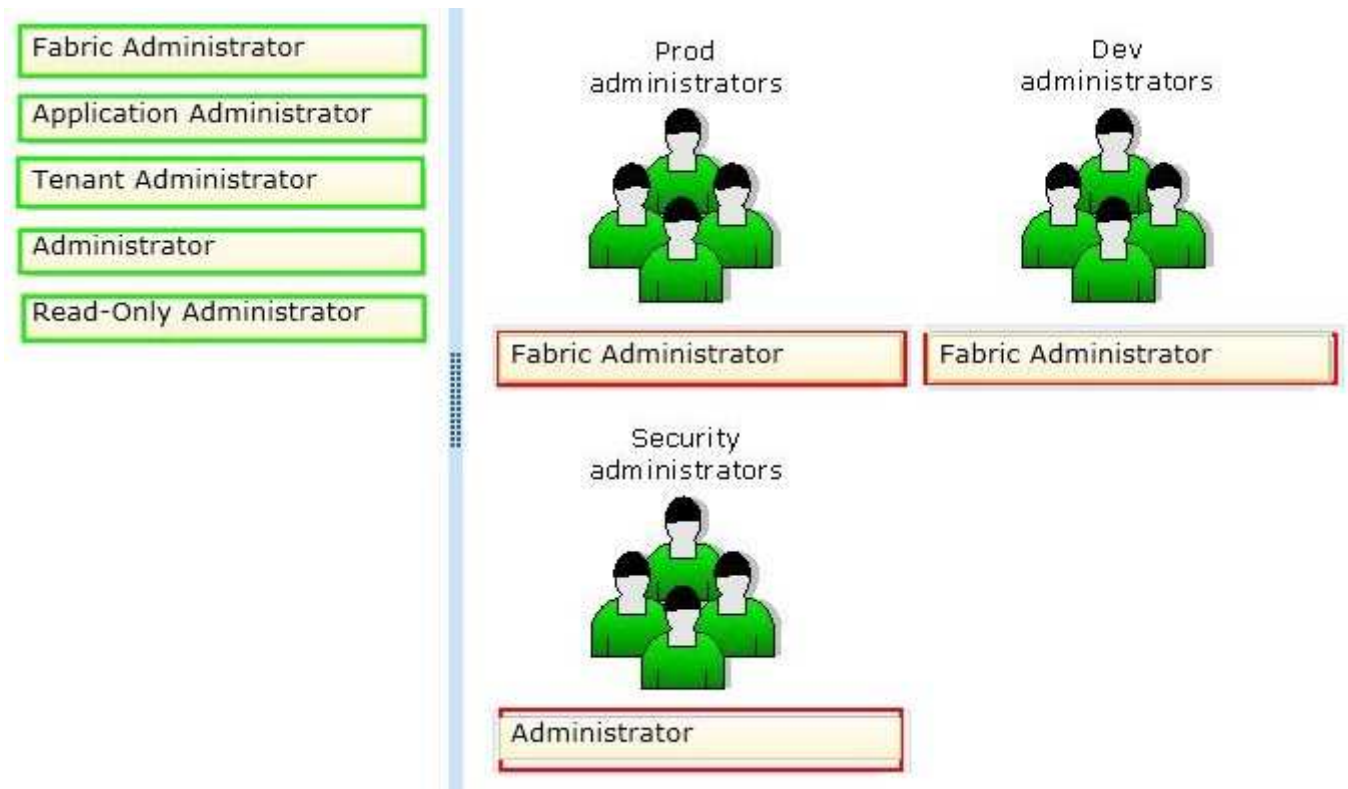
- A.
- B.
- C.
- D.

Correct Answer:

Section: (none)

Explanation

Explanation/Reference:



QUESTION 64

A company has a network that contains one Active Directory Domain Services (AD DS) domain. The domain and forest functional levels are set to Windows Server 2008. All domain controllers run Windows Server 2012.

You need to enable the Active Directory Recycle Bin for the forest. What should you do?

- A. Raise the domain and forest functional levels to Windows Server 2012 R2.
- B. Deploy new domain controllers that have Windows Server 2012 R2 installed.
- C. Raise the domain and forest functional levels to Windows Server 2008 R2.
- D. Upgrade the domain controllers to Windows Server 2012 R2.

Correct Answer: C

Section: (none)

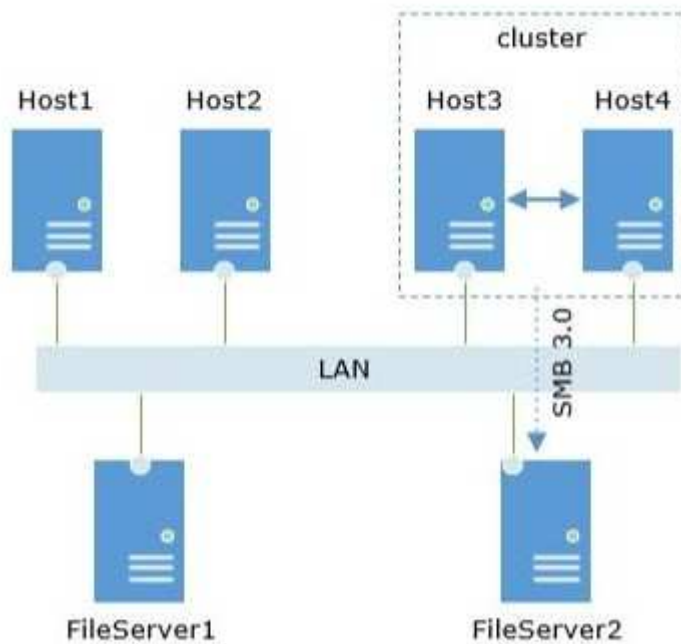
Explanation

Explanation/Reference:

QUESTION 65

HOTSPOT

A company has six physical Windows Server 2012 R2 servers. The servers are configured as shown in the following diagram:



Host 1 and Host2 run Windows Server 2012 R2 and have the Hyper-V role installed.

You need to configure the environment to support shared files that use the VHDX file format.

Use the drop-down menus to complete each statement based on the information presented in the screenshot. Each correct selection is worth one point.

What should you do first?

Create a failover cluster that consists of only FileServer1 and FileServer2.
Create a failover cluster that consists of only Host1 and Host2.
On Host3 and Host4, install additional physical network interface cards (NICs).

What should you do next?

On FileServer2, configure an iSCSI target.
Add additional network interface cards (NICs) to FileServer1 and FileServer2, and configure them.
Configure the Scale-Out File Server role, and create an SMB file share as the storage location.

- A.
- B.
- C.
- D.

Correct Answer:

Section: (none)

Explanation

Explanation/Reference:

What should you do first?

Create a failover cluster that consists of only FileServer1 and FileServer2.
Create a failover cluster that consists of only Host1 and Host2.
On Host3 and Host4, install additional physical network interface cards (NICs).

What should you do next?

On FileServer2, configure an iSCSI target.
Add additional network interface cards (NICs) to FileServer1 and FileServer2, and configure them.
Configure the Scale-Out File Server role, and create an SMB file share as the storage location.

QUESTION 66

A company has an environment that runs System Center 2012 R2 Operations Manager and System Center 2012 R2 Virtual Machine Manager (VMM). The company also has web applications that are used by employees.

You must plan a management strategy for the company.

You need to ensure that you can monitor the web applications from outside the company network.

Which tool should you use as part of the monitoring strategy?

- A. System Center Global Service Monitor
- B. Microsoft Monitoring Agent
- C. System Center Fabric Health Dashboard
- D. Windows Intune

Correct Answer: A

Section: (none)

Explanation

Explanation/Reference:

QUESTION 67

DRAG DROP

You administer a Hyper-V environment that includes two servers named SERVER1 and SERVER2. SERVER1 runs Windows Server 2008 R2 SP1. SERVER2 runs Windows Server 2012 R2. Both servers have the Hyper-V role installed.

SERVER1 contains a virtual machine named VM-APP1. VM-APP1 runs Windows Server 2003 R2 SP2.

You plan to migrate VM-APP1 from SERVER1 to SERVER2. To test the process, you migrate a copy of VM-APP1 from SERVER1 to SERVER2 and observe that the mouse does not function. The mouse on VM-APP1 must work correctly after you migrate it to SERVER2.

You need to migrate the VM-APP1.

Which three actions should you perform in sequence? To answer, move the appropriate actions from the list of actions to the answer area and arrange them in the correct order.

Upgrade the Hyper-V Integration Services on VM-APP1.

From SERVER1, export the virtual machine by using Failover Cluster Manager.

From SERVER2, import VM-APP1 by using Hyper-V Manager.

From SERVER2, import the virtual machine by using Failover Cluster Manager.

Upgrade VM-APP1 to Windows Server 2008 SP2.

From SERVER1, export VM-APP1 by using Hyper-V Manager.

- A.
- B.
- C.
- D.

Correct Answer:

Section: (none)

Explanation

Explanation/Reference:

Upgrade the Hyper-V Integration Services on VM-APP1.

From SERVER1, export the virtual machine by using Failover Cluster Manager.

From SERVER2, import VM-APP1 by using Hyper-V Manager.

From SERVER2, import the virtual machine by using Failover Cluster Manager.

Upgrade VM-APP1 to Windows Server 2008 SP2.

From SERVER1, export VM-APP1 by using Hyper-V Manager.

From SERVER1, export VM-APP1 by using Hyper-V Manager.

From SERVER2, import VM-APP1 by using Hyper-V Manager.

Upgrade the Hyper-V Integration Services on VM-APP1.

QUESTION 68

A company uses Windows Server 2012 R2 servers that have the Hyper-V role installed. The company uses a single System Center 2012 R2 Data Protection Manager (DPM) server to back up and recover the Hyper-V environment.

You deploy a new standalone Hyper-V host server, and then deploy 20 new virtual machines (VMs) to the host server. You create a DPM protection group named ProtectionGroup3.

You need to automate the process of adding the 20 new VMs to ProtectionGroup3.

What should you run?

- A. the Windows PowerShell cmdlet Register-SCVMMManagedComputer
- B. the Windows PowerShell cmdlet Update-SCVMMManagedComputer
- C. the Windows PowerShell script AddNewStandAloneVM.ps1, and specify the Hyper-V server and ProtectionGroup3 as parameters
- D. the Windows PowerShell script AddNewStandAloneVMToDRServer.ps1, and specify the Hyper-V server and ProtectionGroup3 as parameters

Correct Answer: A

Section: (none)

Explanation

Explanation/Reference:

QUESTION 69

A company has Windows Server 2012 R2 servers that have the Hyper-V role installed. The guest virtual machines are configured as follows:

| Configuration | Description |
|-------------------------------|---------------------|
| Operating System | Windows Server 2012 |
| Virtual Machine Generation | Generation 1 |
| Operating System Drive Format | .vhdx |
| Data Drive Format | .vhd |

You need to ensure that the environment supports online virtual hard disk resizing.

What should you do?

- A. Convert the virtual machines to Generation 2 virtual machines.
- B. Deploy clustered storage spaces.
- C. Convert the drive format of the virtual machines to the VHDX file format.
- D. Deploy Serial Attached SCSI (SAS).

Correct Answer: C

Section: (none)

Explanation

Explanation/Reference:

QUESTION 70

DRAG DROP

A company uses System Center 2012 R2 Virtual Machine Manager (VMM). The VMM server has the

following shares:

| Share Name | Share Purpose |
|------------|--|
| \\Share1 | stores resources that are used to deploy services to private clouds |
| \\Share2 | stores configuration scripts that are used to instruct users on how to deploy private clouds |

You need to configure VMM to share physical resources with private cloud users.

Which three actions should you perform in sequence? To answer, move the appropriate actions from the list of actions to the answer area and arrange them in the correct order.

Grant the Authenticated Users group Read permission to the MSSCVMMLibrary share.

Copy the **ApplicationFrameworks** folder from the default library to **C:\Program Files\Virtual Machine Manager\Shared**.

In \\Share1\Data, create a folder named **ApplicationFrameworks**.

In the MSSCVMMLibrary share, create a folder named **ApplicationFrameworks**.

Copy the contents of the ApplicationFrameworks folder from the default library to **\\Share1\Data\ApplicationFrameworks**. Add the \\Share1\Data\ApplicationFrameworks shared folder to the VMM library.

In \\Share1, create a shared folder named **Data**.

- A.
- B.
- C.
- D.

Correct Answer:

Section: (none)

Explanation

Explanation/Reference:

"A Composite Solution With Just One Click" - Certification Guaranteed 57 Microsoft 74-409 : Practice Test

Grant the Authenticated Users group Read permission to the MSSCMMLibrary share.

Copy the **ApplicationFrameworks** folder from the default library to **C:\Program Files\Virtual Machine Manager\Shared**.

In \\Share1\Data, create a folder named **ApplicationFrameworks**.

In the MSSCMMLibrary share, create a folder named **ApplicationFrameworks**.

Copy the contents of the ApplicationFrameworks folder from the default library to **\\Share1\Data\ApplicationFrameworks**. Add the \\Share1\Data\ApplicationFrameworks shared folder to the VMM library.

In \\Share1, create a shared folder named **Data**.

In \\Share1, create a shared folder named **Data**.

Copy the contents of the ApplicationFrameworks folder from the default library to **\\Share1\Data\ApplicationFrameworks**. Add the \\Share1\Data\ApplicationFrameworks shared folder to the VMM library.

Grant the Authenticated Users group Read permission to the MSSCMMLibrary share.

QUESTION 71

A company uses System Center 2012 R2 Operations Manager and System Center 2012 R2 Virtual Machine Manager (VMM). You need to provide a detailed overview of the fabric that services the company's private clouds. What should you do?

- A. Import the Management Pack for System Center 2012 R2 VMM Fabric Dashboard.
- B. Use the System Center Global Service Monitor as part of the monitoring strategy.
- C. Import the Management Pack for System Center 2012 Service Manager.
- D. Use the Windows Intune service as part of the monitoring strategy.

Correct Answer: A

Section: (none)

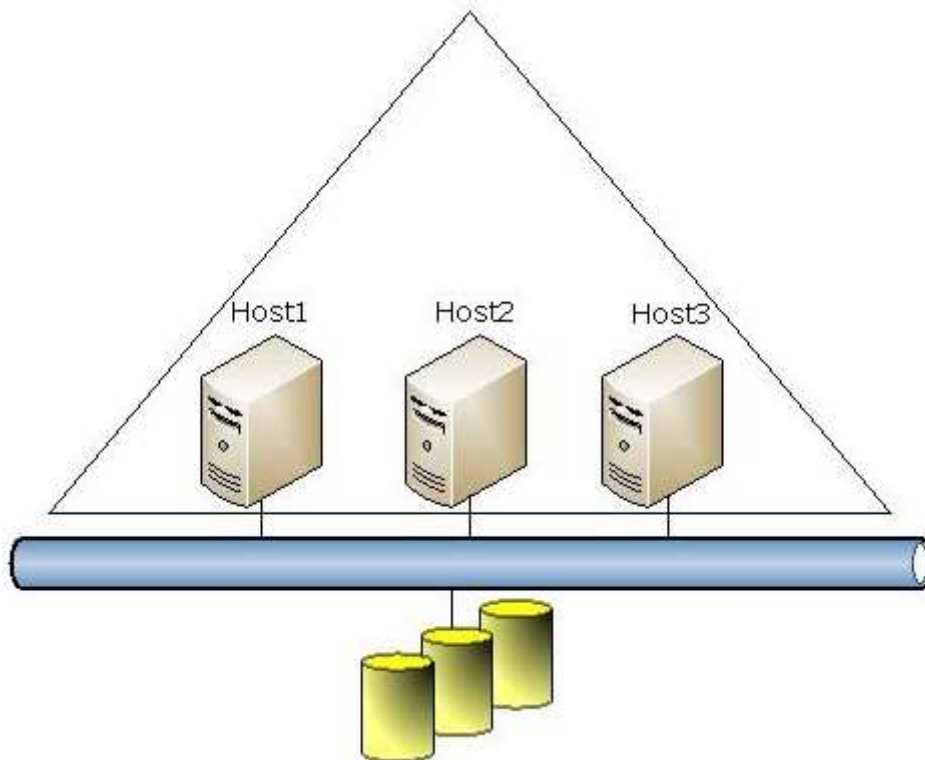
Explanation

Explanation/Reference:

QUESTION 72

HOTSPOT

A company has a Windows Server 2012 R2 Hyper-V environment that contains a single Active Directory Domain Services domain named Contoso.com. The environment also has three servers named Host1, Host2, and Host3 that have the Hyper-V role installed. You configure all of the hosts as a single failover cluster. You have two guest clusters named VM-Cluster1 and VM-Cluster2. The environment is configured as shown in the following diagram:



When a virtual machine guest cluster node is migrated to another host, the guest cluster fails over to the other node. You must provide high availability for all virtual machines. Guest clusters must NOT fail over if they are migrated to another host.

You need to configure the guest clusters.

Use the drop-down menus to complete each statement based on the information presented in the screenshot. Each correct selection is worth one point.

What must you do first?

Configure the Priority cluster group setting.
Configure the SameSubnetThreshold cluster proper
Configure the ClusterGroupWaitDelay cluster proper

What must you do second?

Configure the SameSubnetDelay cluster property.
Configure the HangRecoveryAction cluster property.
Configure the AutoFailbackType cluster group settin

- A.
- B.
- C.
- D.

Correct Answer:

Section: (none)

Explanation

Explanation/Reference:

"A Composite Solution With Just One Click" - Certification Guaranteed 59 Microsoft 74-409 : Practice Test

What must you do first?

Configure the Priority cluster group setting.
Configure the SameSubnetThreshold cluster proper
Configure the ClusterGroupWaitDelay cluster proper

What must you do second?

Configure the SameSubnetDelay cluster property.
Configure the HangRecoveryAction cluster property.
Configure the AutoFailbackType cluster group settin

QUESTION 73

A company has one central data center and five branch offices. Each office has three Hyper-V host servers that run Windows Server 2012 R2 Datacenter edition. Each branch office has a system administrator. You plan to deploy virtual machines (VMs) that run Windows Server 2012 R2 Standard edition to each branch office.

You have the following requirements:

The VMs must be activated at the branch offices, even if the branch office has no Internet connectivity. Activation keys must NOT be shared with the branch office administrators. You must be able to track license usage from the central location, even without access rights to the VMs. You must be able to verify license compliance and perform real time reporting on license usage from a central location.

You need to configure licensing and activation for the VMs.

Which feature or tool should you use?

- A. Multiple Activation Key (MAK)
- B. Volume Activation Management Tool (VAMT)
- C. Key Management Service (KMS)
- D. Automatic Virtual Machine Activation (AVMA)

Correct Answer: D

Section: (none)

Explanation

Explanation/Reference:

QUESTION 74

DRAG DROP

A company has a Hyper-V host server that runs Windows Server 2012 R2 Datacenter edition. The host server has a Generation 2 virtual machine (VM) that runs Windows Server 2012 R2 Standard edition. The drive that contains the VM system partition is at 90 percent of its capacity.

You have the following requirements:

The VM must continue to run during any system maintenance activities. You must use the least amount of administrative effort to accomplish the task.

Which three actions should you perform in sequence? To answer, move the appropriate actions from the list of actions to the answer area and arrange them in the correct order.

Expand the VHDX file.

Create a new file that uses the VHDX file format and attach it to the VM.

Add the new VHDX file to the VM.

From the VM, extend the volume.

From Hyper-V Manager, edit the disk.

- A.
- B.
- C.
- D.

Correct Answer:

Section: (none)

Explanation

Explanation/Reference:

Expand the VHDX file.

Create a new file that uses the VHDX file format and attach it to the VM.

Add the new VHDX file to the VM.

From the VM, extend the volume.

From Hyper-V Manager, edit the disk.

Create a new file that uses the VHDX file format and attach it to the VM.

Add the new VHDX file to the VM.

From the VM, extend the volume.

QUESTION 75

You have a Windows Server 2012 R2 Hyper-V environment that includes System Center 2012 R2 Virtual Machine Manager (VMM). The environment includes five physical servers. The servers are configured as follows:

| Server Name | Operating System | Memory | Disk Volume |
|-------------|---|---------|-------------|
| NYC-FS | Windows Server 2012 Datacenter | 2048 MB | 3 TB |
| NYC-DEV | Windows Server 2008 R2 Enterprise | 1024 MB | 1 TB |
| NYC-EX | Windows Server 2008 Standard 32-bit | 4096 MB | 4 TB |
| NYC-PR | Windows Server 2003 Enterprise x64 Service Pack 2 | 512 MB | 500 GB |
| NYC-WEB | Windows Server 2003 Web Edition | 768 MB | 200 GB |

You plan to use VMM to migrate physical machines to virtual machines.

You must migrate all servers that support physical to virtual (P2V) migration.

You need to migrate the servers.

Which three servers should you migrate? Each correct answer presents part of the solution.

- A. NYC-WEB
- B. NYC-PR
- C. NYC-DEV
- D. NYC-FS
- E. NYC-EX

Correct Answer: ABC

Section: (none)

Explanation

Explanation/Reference:

Explanation: The source computer cannot have any volumes larger than 2040 GB. This disqualifies NYC-FS(not D) and NYC-EX (not E).

Note:

* Requirements on the Source Machine

To perform a P2V conversion, your source computer:

/Must have at least 512 MB of RAM.

/ Cannot have any volumes larger than 2040 GB.

/ Must have an Advanced Configuration and Power Interface (ACPI) BIOS Vista WinPE will not install on a non-ACPI BIOS.

/ Must be accessible by VMM and by the host computer.

/ Cannot be in a perimeter network. A perimeter network, which is also known as a screened subnet, is a collection of devices and subnets placed between an intranet and the Internet to help protect the intranet from unauthorized Internet users. The source computer for a P2V conversion can be in any other network topology in which the VMM server can connect to the source machine to temporarily install an agent and can make Windows Management Instrumentation (WMI) calls to the source computer.

"A Composite Solution With Just One Click" - Certification Guaranteed 62 Microsoft 74-409 : Practice Test

QUESTION 76

DRAG DROP

A software company has a Windows Server 2012 R2 server that has the Hyper-V role installed. The server hosts a single virtual machine (VM) named VM1. VM1 has one virtual CPU, one virtual hard disk, and one virtual network interface card (NIC) that is attached to an external network.

The company prepares to test its software in VM1. Before testing begins, VM1 must meet the following requirements:

Availability of network bandwidth must be maximized.

VM network connectivity must be fault tolerant.

You need to configure the environment.

Which four actions should you perform in sequence? To answer, move the appropriate actions from the list of actions to the answer area and arrange them in the correct order.

Add a virtual NIC to the VM and associate it with the appropriate physical NIC.

Add a NIC to the Hyper-V host server.

From the Hyper-V host server, run the Windows PowerShell cmdlet **New-NetLbfoTeam** to create a NIC team.

From the Hyper-V host server, run the Windows PowerShell cmdlet **New-NetSwitchTeam** to create a NIC team.

From the Hyper-V host server, run the Windows PowerShell command **Get-VM VM1 | Set-VMNetworkAdapter -AllowTeaming On**.

- A.
- B.
- C.
- D.

Correct Answer:

Section: (none)

Explanation

Explanation/Reference:

"A Composite Solution With Just One Click" - Certification Guaranteed 63 Microsoft 74-409 : Practice Test

Add a virtual NIC to the VM and associate it with the appropriate physical NIC.

Add a NIC to the Hyper-V host server.

From the Hyper-V host server, run the Windows PowerShell cmdlet **New-NetLbfoTeam** to create a NIC team.

From the Hyper-V host server, run the Windows PowerShell cmdlet **New-NetSwitchTeam** to create a NIC team.

From the Hyper-V host server, run the Windows PowerShell command **Get-VM VM1 | Set-VMNetworkAdapter -AllowTeaming On**.

Add a NIC to the Hyper-V host server.

Add a virtual NIC to the VM and associate it with the appropriate physical NIC.

From the Hyper-V host server, run the Windows PowerShell command **Get-VM VM1 | Set-VMNetworkAdapter -AllowTeaming On**.

From the Hyper-V host server, run the Windows PowerShell cmdlet **New-NetLbfoTeam** to create a NIC team.

QUESTION 77

HOTSPOT

You are the virtualization administrator for an organization. You use System Center 2012 R2 Virtual Machine Manager (VMM) to configure a virtual machine (VM) template that will host a new application.

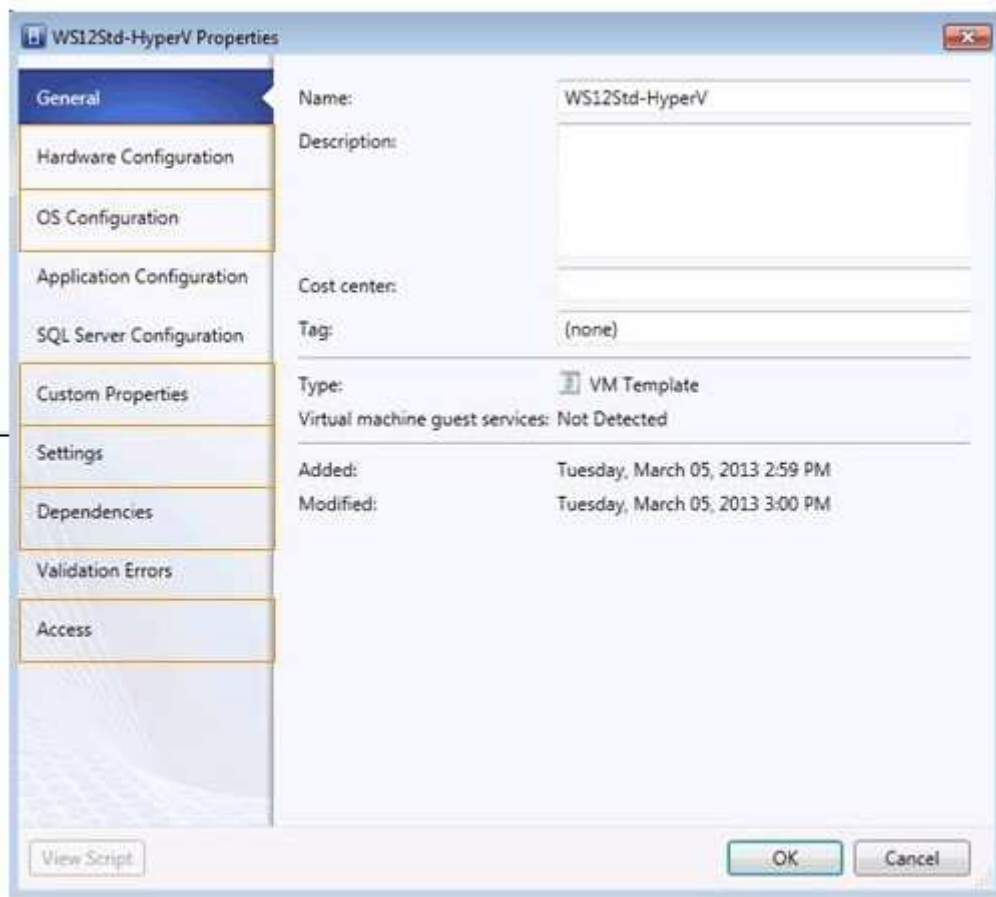
You have the following requirements for new VMs that host the application:

New VMs must be highly available.

You must join the VMs to an Active Directory Domain Services domain at deployment.

You need to modify the VM template to support the requirements.

On the properties page for the template, which two settings should you configure? To answer, select the appropriate settings in the answer area.



- A.
- B.
- C.
- D.

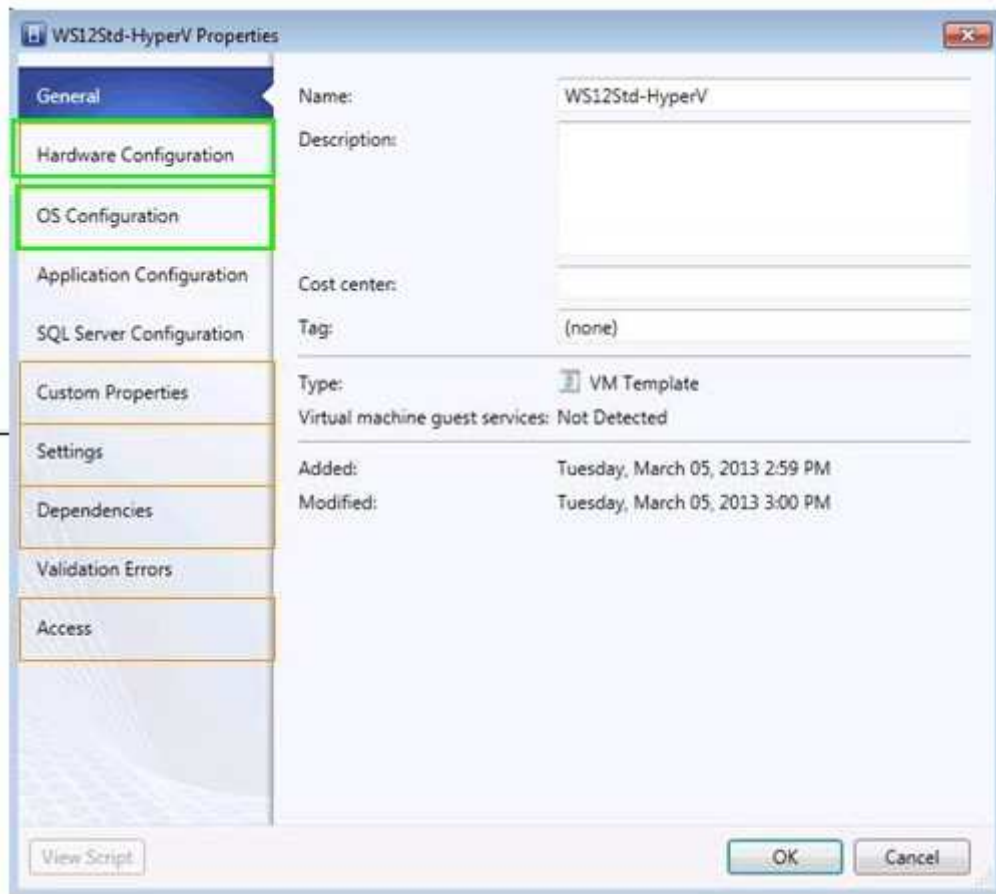
Correct Answer:

Section: (none)

Explanation

Explanation/Reference:

"A Composite Solution With Just One Click" - Certification Guaranteed 65 Microsoft 74-409 : Practice Test



QUESTION 78
DRAG DROP

A company has one Active Directory Domain Services (AD DS) forest that contains two domains. The company has a Hyper-V environment that runs Windows Server 2012 R2. The company also has two virtual machines (VMs) that run Windows Server 2012. The VMs are NOT part of a domain.

You plan to deploy a guest cluster by using a shared virtual hard disk (VHDX). You must use native disk support that is included in the Failover Clustering feature. The compliance department requires that you perform as many tasks as possible with your domain account for auditing purposes.

You need to prepare to create the guest cluster.

Which three actions should you perform in sequence? To answer, move the appropriate actions from the list of actions to the answer area and arrange them in the correct order.

Install Windows Server 2012 R2 on the VMs.

Log on to the VMs by using your domain account and then configure the disks on the VMs as dynamic disks.

Join the VMs to separate AD DS domains.

Log on to the VMs by using your domain account and then configure the disks on the VMs as basic disks.

Join both VMs to the same AD DS domain by using an offline domain join.

- A.
- B.
- C.
- D.

Correct Answer:

Section: (none)

Explanation

Explanation/Reference:

Install Windows Server 2012 R2 on the VMs.

Log on to the VMs by using your domain account and then configure the disks on the VMs as dynamic disks.

Join the VMs to separate AD DS domains.

Log on to the VMs by using your domain account and then configure the disks on the VMs as basic disks.

Join both VMs to the same AD DS domain by using an offline domain join.

Install Windows Server 2012 R2 on the

Log on to the VMs by using your domain
then configure the disks on the VMs as

Join both VMs to the same AD DS domain
offline domain join.

QUESTION 79

DRAG DROP

A company has a single-domain Active Directory Domain Services (AD DS) environment. Some servers and all domain controllers are deployed on the internal network. All servers in the perimeter network are joined to a workgroup. The company uses System Center 2012 R2 Operations Manager to monitor the server infrastructure on the internal network.

The company plans to use Audit Collection Services (ACS) for one Internet Information Services (IIS) server that is in the perimeter network.

You need to configure the authentication type and ACS role for Operations Manager and the IIS server.

How should you configure the servers? To answer, drag the appropriate authentication type and ACS role to the location or locations in the answer area. Each authentication type and ACS role may be used once, more than once, or not at all. You may need to drag the split bar between panes or scroll to view content.

| |
|----------------|
| certificate |
| Kerberos |
| ACS forwarder |
| ACS collector |
| gateway server |

| | Operations Manager | IIS Server |
|---------------------|--------------------|------------|
| Authentication Type | | |
| ACS Role | | |

- A.
- B.
- C.
- D.

Correct Answer:

Section: (none)

Explanation

Explanation/Reference:

| |
|----------------|
| certificate |
| Kerberos |
| ACS forwarder |
| ACS collector |
| gateway server |

| | Operations Manager | IIS Server |
|---------------------|--------------------|---------------|
| Authentication Type | certificate | certificate |
| ACS Role | ACS collector | ACS forwarder |

QUESTION 80

An organization has two teams of developers. One team develops web applications. The other team develops mobile applications.

You administer servers for the organization. All four servers run Windows Server 2012 R2 and are part of a Hyper-V cluster. You create six virtual machines (VMs) for each team.

You plan to create a virtual environment for the teams. You have the following requirements:

Both teams must use the 10.10.10.0/24 subnet.

Each VM for the web application team must have network connectivity with all other web application VMs.
Each VM for the mobile application team must have network connectivity with all other mobile application VMs.

The VMs for the web application team must NOT connect to the VMs for the mobile application team.

You need to create the network for the VMs.

What should you do?

- A. Configure one connected network. Allow new VM networks created on this logical network to use network virtualization.

- B. Set the virtual LAN ID for the management network.
- C. Enable private virtual LAN (PVLAN) networks.
- D. Configure one connected network. Do NOT allow new VM networks created on this logical network to use network virtualization.

Correct Answer: A

Section: (none)

Explanation

Explanation/Reference:

QUESTION 81

An organization has private and public cloud resources. The organization has Windows Server 2012 R2 servers that have the Hyper-V role installed. You have one four-node cluster of Hyper-V host servers. You use System Center 2012 R2.

The virtual machines that run on the cluster must remain online when you install updates on the Hyper-V host servers.

You need to install updates on the Hyper-V host servers.

What should you do?

- A. Configure Windows Serve' Update Services (WSUS) to provide updates to the Hyper-V host servers in the cluster.
- B. Add all the virtual machines hosted on the cluster to a collection in System Center 2012 R2 Configuration Manager. Deploy updates to the collection.
- C. Use the Cluster-Aware Updating (CAU) wizard.
- D. Configure Windows Update on the Hyper-V host servers to download updates from Microsoft Update.

Correct Answer: A

Section: (none)

Explanation

Explanation/Reference:

QUESTION 82

You administer a server that runs Windows Server 2012 R2 that has the Hyper-V role installed. You plan to apply an update to a virtual machine (VM). You have the following requirements:

You must be able to quickly revert back to a pre-update state. The solution must minimize storage requirements on the server.

You need to apply the update. What should you do?

- A. Run the Windows PowerShell cmdlet New-VirtualDiskClone.
- B. Create a checkpoint of the VM.
- C. Run the Windows PowerShell cmdlet Export-VMSnapshot.
- D. Export the VM.

Correct Answer: B

Section: (none)

Explanation

Explanation/Reference:

QUESTION 83

A company has Hyper-v host servers that run Windows Server 2012. The company also has virtual

machines that run Windows Server 2008 R2 or Windows Server 2012.

You upgrade the Hyper-V host servers to Windows Server 2012 R2.

You need to ensure that all virtual machines can PXE boot by using a standard network adapter.

What should you do?

- A. Create Generation 2 virtual machines.
- B. Upgrade all existing virtual machines to Windows Server 2012 R2.
- C. Upgrade the existing virtual machines that run Windows Server 2008 R2 to Windows Server 2012 R2.
- D. Create Generation 1 virtual machines.

Correct Answer: A

Section: (none)

Explanation

Explanation/Reference:

QUESTION 84

A company has a virtualization infrastructure that consists of two Hyper-V host servers. The host servers and all of the virtual machines (VMs) run Windows Server 2012 R2.

The company plans to deploy VMs by using file shares that use the Server Message Block (SMB) protocol.

You need to store the maximum amount of VM data on the SMB file shares.

Which three file types should you store on the SMB file shares? Each correct answer presents part of the solution.

- A. VM logical unit numbers (LUNs)
- B. VM configuration files
- C. Hyper-V host server logical unit numbers (LUNs)
- D. VM snapshots
- E. VM virtual hard disks (VHDs)

Correct Answer: BDE

Section: (none)

Explanation

Explanation/Reference:

Explanation: A Windows Server 2012 Hyper-V host can now store virtual machine configuration files, VHDs, and snapshots in file shares over the SMB 3.0 protocol.

QUESTION 85

You are the virtualization administrator for an organization that manages private and public cloud-based resources. The organization uses Windows Server 2012 R2 servers that have the Hyper-V role installed. All Hyper-V host servers are configured as nodes in a four-node cluster. The organization also uses System Center 2012 R2 Configuration Manager.

Operating system updates to each host server require a system reboot.

You need to ensure that the virtual machines remain online during any reboots required by the updates.

What should you do?

- A. in System Center 2012 R2 Configuration Manager, add all of the servers to a collection. Deploy updates to the collection.
- B. Apply updates by using the Virtual Machine Servicing Tool (VMST).
- C. Implement cluster-aware updating with the Cluster-Aware Updating (CAU) wizard.

- D. Configure orchestrated updates of Hyper-V host clusters in System Center 2012 R2 Virtual Machine Manager (VMM).

Correct Answer: C

Section: (none)

Explanation

Explanation/Reference:

QUESTION 86

HOTSPOT

You administer the Hyper-V environment for a company. All virtual machines must use dynamic memory and virtual non-uniform memory access (NUMA) settings that are aligned to the underlying hardware.

One virtual machine is misconfigured.

You need to update the misconfigured virtual machine.

In the Settings dialog box for the virtual machine, which two options should you select?



- A.
- B.
- C.
- D.

Correct Answer:

Section: (none)

Explanation

Explanation/Reference:



QUESTION 87

You plan to use a Hyper-v host server to host virtual desktops for external customers.

You have the following requirements:

Individual virtual machines (VMs) must be isolated from one another.

VMs must have access to the Internet.

IP addresses should be used in the most efficient manner possible. The configuration must minimize administrative effort and management complexity.

You need to configure the virtual environment.

What should you do?

- A. Configure a port virtual local area network (PVLAN). Connect all new VMs to the PVLAN.
- B. Configure virtual networking with network isolation. Create a unique VM network for each VM.
- C. Deploy VMs to the same VM network. Enable DHCP Guard and Router Guard network extensions.
- D. Configure a virtual network with no isolation. Deploy VMs to the same VM network.
Configure Windows firewall on each VM to prevent the VM from communicating with other VMs on the same VM network.

Correct Answer: A

Section: (none)

Explanation

Explanation/Reference:

QUESTION 88

HOTSPOT

A company has a single Active Directory Domain Services (AD DS) domain and Windows Server 2012 R2 servers that have the Hyper-V role installed. The company uses System Center 2012 R2 Virtual Machine Manager (VMM) to manage the Hyper-V environment. Users access company resources from the Internet.

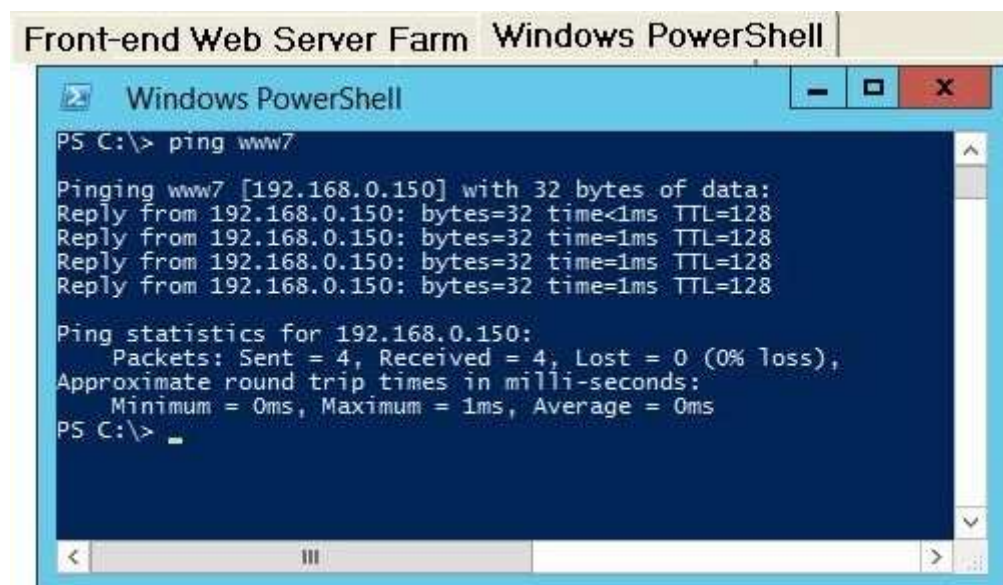
There is an existing front-end web server farm that contains virtual machines (VMs), as shown in the Front-end Web Server Farm exhibit. (Click the Exhibit button.) You use the VMs to deliver a website to the Internet.



The servers are configured as shown in the following table:

| Environment | Host Name | Subnet Assignment |
|-------------|-----------|-------------------|
| www | www1 | 192.168.0.144 |
| www | www2 | 192.168.0.145 |
| www | www3 | 192.168.0.146 |
| www | www4 | 192.168.0.147 |
| www | www5 | 192.168.0.148 |
| www | www6 | 192.168.0.149 |
| www | www7 | 192.168.0.150 |

You preform connectivity tests between all of the front-end web servers. The connectivity tests all have the same results, as shown in the Windows PowerShell exhibit. (Click the Exhibit button.)



The company plans to enhance overall security of the virtual environment. The front-end web servers must NOT be able to communicate with each other.

You need to implement changes to the environment.

For each of the following statements, select Yes if the statement is true. Otherwise, select No. Each correct selection is worth one point.

"A Composite Solution With Just One Click" - Certification Guaranteed 75 Microsoft 74-409 : Practice Test

| Yes | No | |
|-----------------------|-----------------------|--|
| <input type="radio"/> | <input type="radio"/> | A port virtual local area network (PVLAN) must be created for the front-end web servers. |
| <input type="radio"/> | <input type="radio"/> | The IP addresses for the PVLAN must be in the same subnet as VLAN22. |
| <input type="radio"/> | <input type="radio"/> | The front-end web servers must only communicate with the corporate network. |

- A.
- B.
- C.
- D.

Correct Answer:

Section: (none)

Explanation

Explanation/Reference:

| Yes | No | |
|----------------------------------|----------------------------------|--|
| <input checked="" type="radio"/> | <input type="radio"/> | A port virtual local area network (PVLAN) must be created for the front-end web servers. |
| <input checked="" type="radio"/> | <input type="radio"/> | The IP addresses for the PVLAN must be in the same subnet as VLAN22. |
| <input type="radio"/> | <input checked="" type="radio"/> | The front-end web servers must only communicate with the corporate network. |

QUESTION 89

You administer two Windows 2012 R2 servers that have the Hyper-V role installed. You plan to deploy a new Hyper-V cluster. The cluster instance must NOT be added to Active Directory. You need to deploy the cluster. What should you do?

- A. Use Hyper-V Manager to deploy the cluster.
- B. Use Failover Cluster Manager to deploy the cluster.
- C. Run the Windows PowerShell cmdlet New-Cluster. Specify ActiveDirectoryAndDNS for the AdministrativeAccessPoint parameter.
- D. Run the Windows PowerShell cmdlet New-Cluster. Specify DNS for the AdministrativeAccessPoint parameter.

Correct Answer: D

Section: (none)

Explanation

Explanation/Reference:

QUESTION 90**DRAG DROP**

You administer a Windows Server 2012 R2 server that has the Hyper-V role installed.

You have the following virtual machines (VMs):

| Server Name | Environment |
|-------------|-------------|
| VM-Server1 | Production |
| VM-Server2 | Production |
| VM-Server3 | Production |
| VM-Server4 | Test |
| VM-Server5 | Test |
| VM-Server6 | Test |

You also have the following two switches:

| Network Switch Name | Network Switch Configuration |
|---------------------|------------------------------|
| Switch1 | Private Network Switch |
| Switch2 | Internal Network Switch |

VM-Server1 has network connectivity to VM-Server2 and VM-Server3, as well as the host server, VM-Server4 has network connectivity to VM-Server5, but NOT to the host server.

You need to configure VM-Server6 to ensure that VM-Server6 has network connectivity only to the other test VMs.

Which three actions should you perform in sequence? To answer, move the appropriate actions from the list of actions to the answer area and arrange them in the correct order,

From the Network and Sharing Center, add a virtual Fibre Channel adapter to VM-Server6.

On the Hyper-V host server, open Hyper-V Manager.

From Hyper-V Manager, add a virtual network adapter to VM-Server6.

Associate the network adapter to Switch1.

Associate the network adapter to Switch2.

On the Hyper-V host server, open Network and Sharing Center.

A.

B.

- C.
- D.

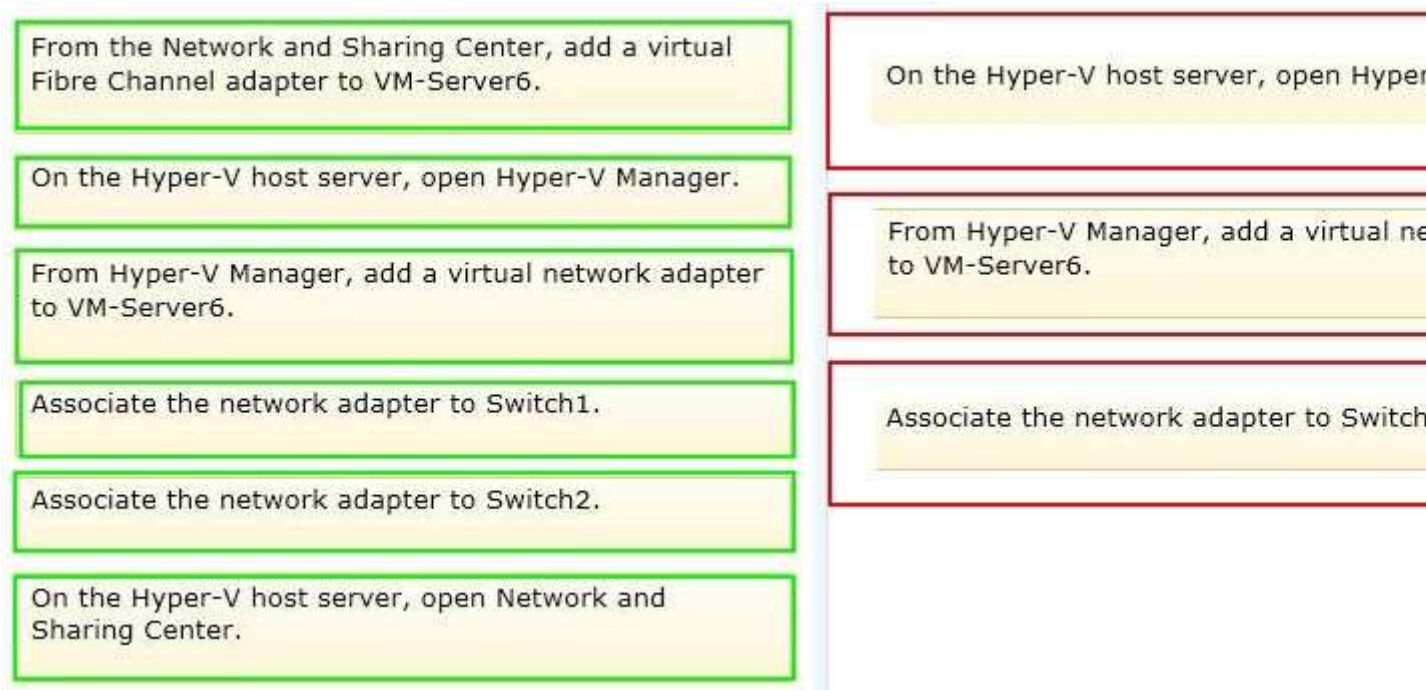
Correct Answer:

Section: (none)

Explanation

Explanation/Reference:

"A Composite Solution With Just One Click" - Certification Guaranteed 77 Microsoft 74-409 : Practice Test



QUESTION 91

A company has Active Directory Domain Services (AD DS) domain controllers that run on Windows Server 2012 R2 servers. There are two forests, and each has a single domain. There is a two-way forest trust between the forests. The company uses Hyper-V for server virtualization. The Hyper-V environment contains the Hyper-V host servers as shown in the following table:

| Number of Hyper-V hosts | Domain or Workgroup | Network location |
|-------------------------|---------------------|-------------------|
| 4 | Contoso.com | Internal network |
| 2 | Fabrikam.com | Internal network |
| 2 | Ext.contoso.com | Perimeter network |

You prepare to deploy System Center 2012 R2 Data Protection Manager (DPM) to back up the Hyper-V environment. The deployment must meet the following requirements:

ensure that all Hyper-V servers can be backed up from a minimum of two DPM servers
minimize the total number of DPM servers

You need to deploy DPM to the environment.

What should you deploy?

- A. four DPM servers in the internal network and two DPM servers in the perimeter network
- B. two DPM servers in the internal network and one DPM server in the perimeter network
- C. two DPM servers in the internal network only
- D. two DPM servers in the internal network and two DPM servers in the perimeter network

Correct Answer: A

Section: (none)

Explanation

Explanation/Reference:

QUESTION 92

A company has Windows Server 2012 R2 servers that have the Hyper-V role installed. The guest virtual machines are configured as follows:

| Configuration | Description |
|-------------------------------|---------------------|
| Operating System | Windows Server 2012 |
| Virtual Machine Generation | Generation 1 |
| Operating System Drive Format | .vhdx |
| Data Drive Format | .vhd |

You need to configure the environment to support the creation of failover clusters.

What should you do?

- A. Convert the data drives to use the VHDX file format.
- B. Convert the operating system drive to use the virtual hard disk (VHD) file format.
- C. Convert the virtual machines to Generation 2 virtual machines.
- D. Upgrade the operating system to Windows Server 2012 R2.

Correct Answer: A

Section: (none)

Explanation

Explanation/Reference:

QUESTION 93

An organization has private and public cloud resources. The organization has Windows Server 2012 R2 servers that have the Hyper-V role installed. You have one four-node cluster of Hyper-V host servers. You use System Center 2012 R2.

The virtual machines that run on the cluster must remain online when you install updates on the Hyper-V host servers.

You need to install updates on the Hyper-V host servers.

What should you do?

- A. Configure Windows Server Update Services (WSUS) to provide updates to the virtual machines hosted on the cluster.
- B. Add all the servers to a collection in System Center 2012 R2 Configuration Manager. Deploy updates to the collection.
- C. Create orchestrated updates of Hyper-V host clusters by using System Center 2012 R2 Virtual Machine Manager (VMM).
- D. Configure Windows Update on the Hyper-V host servers to download updates from Microsoft Update.

Correct Answer: A

Section: (none)

Explanation

Explanation/Reference:

QUESTION 94

You are the virtualization administrator for an organization. The organization uses all components of System Center 2012 R2 in the production environment. A power supply in a Hyper-v host server fails. The host server continues to run and host virtual machines in this degraded state.

You have the following requirements:

Move virtual machines from host servers that are running in a degraded state to another host server.
Prevent placement of new virtual machines on degraded host servers.
You need to configure the environment.

Which System Center feature should you implement?

- A. Dynamic Optimization
- B. Performance and Resource Optimization (PRO)
- C. Shared VHDX files
- D. Placement Rules

Correct Answer: B

Section: (none)

Explanation

Explanation/Reference:

QUESTION 95

You administer an environment that contains a Windows Server 2012 R2 server that has the Hyper-V role installed and a server that has System Center 2012 R2 Virtual Machine Manager (VMM). You plan to deploy two virtual machines (VMs).

You have the following requirements:

You must minimize the likelihood that the VMs will be offline at the same time. You must minimize the likelihood that the VMs will reside on the same Hyper-V host server in the Hyper-V cluster.

You need to configure the two VMs. What should you do?

- A. Configure the two VMs to include a value for the preferred owners setting.
- B. Configure only one VM as highly available.
- C. Configure the VMs to reside on different storage area networks (SANs).
- D. Configure the VMs to use a custom property that contains the same value. Then, configure the VMs as members of the same availability set.

Correct Answer: B

Section: (none)

Explanation

Explanation/Reference:

QUESTION 96

A company has a Windows Server 2012 R2 Hyper-V host server named NYC-HOST1 that hosts a virtual machine (VM) named NYC-VM1.

A critical security update must be applied immediately to NYC-VM1. There is no time to test the update before deployment. You must minimize the amount of time needed to restore the VM.

You need to capture the state of NYC-VM1 before you install the critical security update.

What should you do?

- A. From Hyper-V Manager, select NYC-VM1, and then create a checkpoint.
- B. Run the Windows PowerShell command Save-VM NYC-VM1.
- C. Run the Windows PowerShell command Get-VMSnapshot NYC-VM1.
- D. Run the Windows PowerShell command Export-VMSnapshot NYC-VM1.

Correct Answer: B

Section: (none)

Explanation

Explanation/Reference:

QUESTION 97

HOTSPOT

You administer two Windows 2012 R2 servers named SERVER1 and SERVER2. Both servers have the Hyper-V role installed. SERVER1 has network adapters that have Remote Direct Memory Access (RDMA) enabled. You plan to implement live migration in the environment.

You have the following requirements:

Use remote management tools to manage the live migration tasks. Optimize network performance during live migration.

You need to configure live migration settings on each host server.

In the Live Migrations section of the Hyper-V Settings window, which two options should you select? To answer, select the appropriate option buttons in the dialog box in the answer area.

The screenshot shows the 'Advanced Features' tab in the Hyper-V Settings window. It contains two sections: 'Authentication protocol' and 'Performance options'. In the 'Authentication protocol' section, 'Use Kerberos' is selected. In the 'Performance options' section, 'SMB' is selected.

Advanced Features

Authentication protocol
Select how you want to authenticate live migrations.

- ☐ Use Credential Security Support Provider (CredSSP)
You must log on to the server to perform a live migration.
- ☒ Use Kerberos
This is more secure but requires constrained delegation for live migration.

Performance options
Select performance configuration options.

- ☐ TCP/IP
The memory of the virtual machine being migrated is copied over the network to the destination server over a TCP/IP connection.
- ☐ Compression
The memory of the virtual machine being migrated is compressed and then copied over the network to the destination server over a TCP/IP connection.
- ☒ SMB
The memory of the virtual machine being migrated is copied over the network to the destination server over a SMB connection. SMB Direct will be used if the network adapters of both the source and destination server have Remote Direct Memory Access (RDMA) capabilities enabled.

- A.
- B.
- C.
- D.

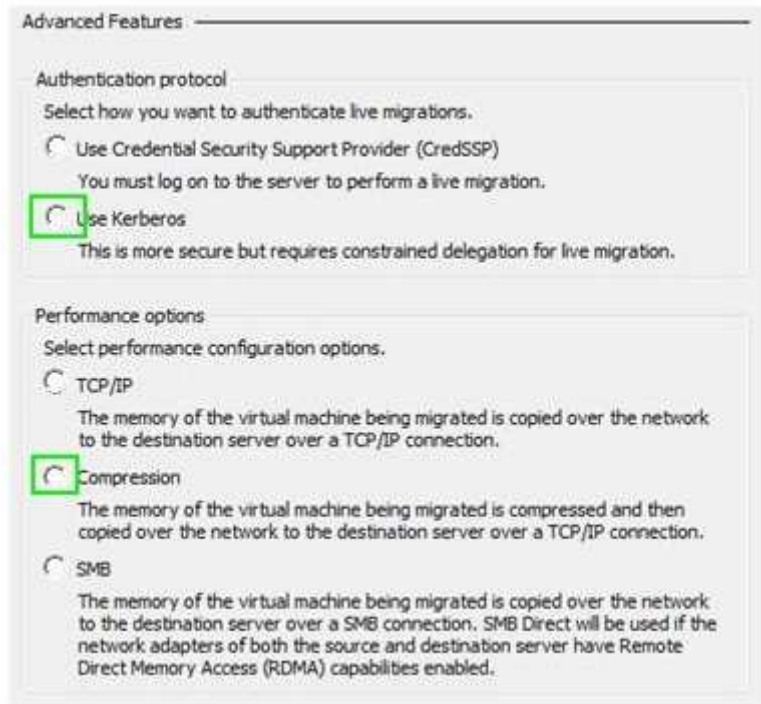
Correct Answer:

Section: (none)

Explanation

Explanation/Reference:

"A Composite Solution With Just One Click" - Certification Guaranteed 82 Microsoft 74-409 : Practice Test



QUESTION 98

An organization has a private cloud infrastructure. The organization uses Windows Server 2012 R2 servers that have the Hyper-V role installed. The organization uses all components of System Center 2012 R2.

You use Virtual Machine Manager to configure four clouds and self-service groups. In addition, you configure price sheets for chargeback reporting in Service Manager. You must implement chargeback for private cloud customers.

You need to ensure that chargeback reports in Service Manager will return data.

Which three actions should you perform? Each correct answer presents part of the solution.

- A. In Service Manager, configure the Virtual Machine Manager Connector.
- B. Configure integration between Virtual Machine Manager and Operations Manager.
- C. Import a list of Hyper-V host servers into Service Manager by using the Import Instances "A Composite Solution With Just One Click" - Certification Guaranteed 83 Microsoft 74-409 : Practice Test from the CSV File tool.
- D. In Service Manager, configure the Operations Manager configuration item connector.
- E. In Service Manager, configure the Configuration Manager Connector.
- F. In Service Manager, configure the Orchestrator connector.

Correct Answer: BCD

Section: (none)

Explanation

Explanation/Reference:

Explanation: D: Configure the SCOM (System Center Operations Manager) connector in Service Manager To get the Cloud objects we were seeing in Operations Manager into the CMDB in Service Manager, the Operations Manager connector in Service Manager needs to be configured.

To do this, follow these steps:

Open the Service Manager console as an Administrator. Select "Administration" in the Wunderbar and expand "Administration and Connectors." In the action menu, select: Create Connector > Operations Manager CI Connector Etc.

B: Configuring Virtual Machine Manager (VMM) for Chargeback

In Virtual Machine Manager the following configuration need to take place:

/ Create one or more Clouds

/ Provision or assign VMs to the Clouds

/ (B) Configure integration between Virtual Machine Manager and Operations Manager / Verify that the right information is exchanged between Operations Manager and Virtual Machine Manager.

C: About Importing Data from Comma-Separated Files into Service Manager Configuration items contained in a comma-separated value (.csv) file can be imported into the Service Manager database by using the Import from CSV File feature. This feature lets you to bulk-import instances of any class type or projection type that is defined in the Service Manager database. You can use this feature to:

- Create configuration item or work item instances from data stored in a tabular format.
- Bulk-edit existing database instances.
- Populate the Service Manager database by using data exported from an external database.
- Circumvent data entry through forms when many class instances must be created at the same time.

"A Composite Solution With Just One Click" - Certification Guaranteed 84 Microsoft 74-409 : Practice Test

QUESTION 99

A company has offices in Hamburg, New York, and San Francisco. The Hamburg office has one Hyper-V host server named HAM-HOST1. The New York office has two Hyper-V host servers named NYC-HOST1 and NYC-HOST2. The San Francisco office has one Hyper-V host server named SFC-HOST1. All Hyper-V host servers run Windows Server 2012 R2.

You must deploy an application virtual machine (VM) that will be used by the sales team at the company.

You need to ensure that the VM remains available during unplanned system outages.

Which solution should you implement?

- A. a Hyper-V cluster that includes NYC-HOST1 and NYC-HOST2
- B. Server Message Block (SMB) 3.0 file shares on NYC-HOST1, NYC-HOST2, SFC-HOST1, and HAM-HOST1
- C. a Distributed File System (DFS) replication between NYC-HOST1, SFC-HOST1, and HAM-HOST1
- D. dynamic optimization on NYC-HOST1 and NYC-HOST2

Correct Answer: A

Section: (none)

Explanation

Explanation/Reference:

QUESTION 100

You administer an environment that uses a Windows Server 2012 R2 Hyper-V cluster and System Center 2012 R2 Virtual Machine Manager (VMM). You plan to deploy two virtual machines (VMs) that host a line-of-business (LOS) application.

The VMs must reside on the same Hyper-V host server at all times. The LOB application does NOT require high availability.

You need to deploy the VMs.

What should you do?

- A. Add a custom property to both VMs, and assign the same value to each property.
Configure the Hyper-V host cluster to use the same custom property and value. Configure a custom

placement rule that uses filters that are based on the custom property and value.

- B. Configure the VMs to use the same VM network.
- C. Configure the VMs to reside on the same storage area networks (SANs).
- D. Add a custom property to both VMs, and assign the same value to each property.
Configure the VMs as members of the same availability set.

Correct Answer: A

Section: (none)

Explanation

Explanation/Reference:

QUESTION 101

A company has Hyper-V host servers and virtual machines (VMs). All host servers and VMs run Windows Server 2012 R2. You need to ensure that new VMs can boot from a SCSI virtual hard disk. What should you create?

- A. virtual disks that use the virtual hard disk (VHD) format
- B. virtual disks that use the VHDX format
- C. Generation 1 VMs
- D. Generation 2 VMs

Correct Answer: D

Section: (none)

Explanation

Explanation/Reference: